



INDUSTRIAL



HDDEO



MOTORCYCLE

DRIVELINE

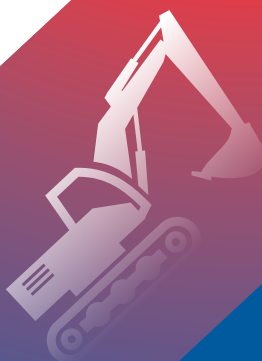


PCMO

BRAKE FLUID



HYDRAULIC



PRODUCT
Catalogue 2025

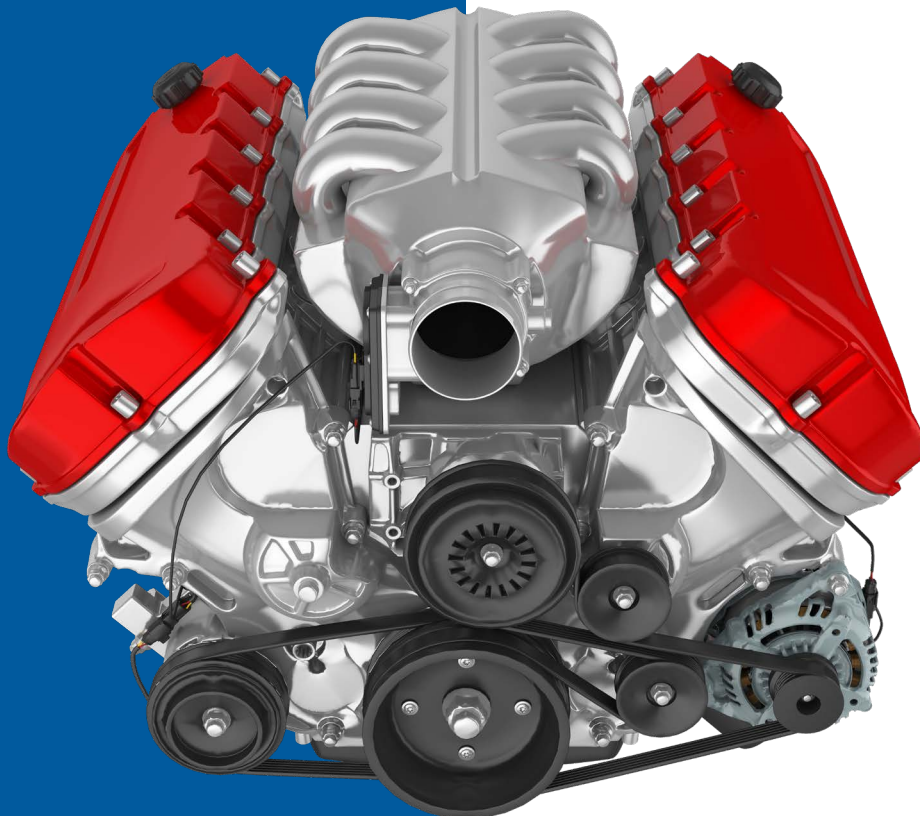
KEEP ENGINE YOUNG

OUR EXCLUSIVE PRODUCT TECHNOLOGY

Modern high-performance engines demand a new generation of lubricants designed to retain their properties under challenging conditions. In response, we have developed proprietary technology featuring up to 20 active ingredients.

Internal extends the lifespan of lubricants, helping to preserve engine performance and longevity. This cutting-edge technology is akin to a cosmetic product, relying on a sophisticated balance and synergistic interaction of its active components to revitalize the oil over time.

As a result, Internal lubricants retain their effectiveness for longer, enabling engines to perform optimally over extended service intervals.





	HDDEO
	PCMO
	MCO
	ATF
	GEAR OIL
	BRAKE FLUID
	COOLANT
	INDUSTRIAL
	GREASE

TABLE OF

Page 5

Page 11

Page 19

Page 23

Page 29

Page 31

Page 34

Page 39

Page 43

INTERNAL



Internal
Enduring Performance

HOW TO READ OUR LABELS



THE INTERNOL EMBOSS ON GALLON

THE ICON EMBOSS ON GALLON

PRODUCT NAME

The complete product name starts with a sub category product classification followed by the SAE GRADE and classification.

COMPOSITION OF THE PRODUCT

The specific formulations of the products are classified as fully synthetic, semi synthetic or mineral motor oil.

THE API

Mention API classification

LOGO POWERED BY NANO ACTIVE TECHNOLOGY

is applied to products that maintain and protect the after-treatment devices of the vehicle.

THE LOGO

The Internol logo symbolizes the fluidity and technological innovation inherent in our diverse product range.

THE PRODUCT CATEGORY

Here represents the application of the product.

PACKAGING CONTENT

Indicates the volume of content of the specific package size.





HDDEO

E-FORCE ULTRA / API: FA-4/SN
FULLY / SEMI SYNTHETIC

DESCRIPTION

E-FORCE ULTRA represents cutting-edge lubricant technology designed for fuel-efficient engines equipped with emission aftertreatment systems requiring API FA-4 specifications. This advanced formulation is tailored for on-highway use, including select 2017 greenhouse gas-compliant diesel engines, to support reduced CO2 emissions and enhanced fuel economy. It is also compatible with EPA 2010-compliant low-emission diesel engines featuring SCR (Selective Catalytic Reduction), DPF (Diesel Particulate Filter), and EGR (Exhaust Gas Recirculation) systems.

MEETS OR EXCEED

- | | | |
|-----------------------------|-------------------------|-----------------------|
| • API FA-4/SN | • FORD WSS - M2C2 14-B1 | • DDC 93K223 |
| • JASO DH-2 | • VOLVO VDS-5 | • Daimler DTFR 15C130 |
| • MB 228.61 (5W-30, 10W-30) | • CUMMINS 20087 | • Mack EOS-5 |

SAE GRADE
5W30 - 10W30
E-FORCE PLATINUM / API: CK-4/SN
FULLY / SEMI SYN / MINERAL

DESCRIPTION

E-FORCE PLATINUM is a premium heavy-duty engine oil engineered to extend engine life under the most demanding on and off-highway conditions. It delivers exceptional performance in modern, high-output, low-emission engines equipped with EGR, DPF, DOC, and SCR-AdBlue NOx reduction systems. Its superior low-temperature fluidity and pumpability, combined with an advanced additive system, provide outstanding wear protection and contribute to prolonged engine life. E-FORCE PLATINUM is specifically designed for on-road vehicles compliant with Euro VI standards and off-road vehicles meeting EU Stage IIIA, IIIB, IV, and US Tier 4 emission requirements.

MEETS OR EXCEED

- | | | | |
|---------------------|------------------------|--------------------------|-----------------------|
| • API CK-4/SN | • ACEA E6/E8/E9/E11-22 | • Mack EOS-4.5 | • DEUTZ DQC IV-LA |
| • Caterpillar ECF-3 | • RENAULT RLD-4 | • MAN M3677/M3777 | • FORD WSS-M2C 171-F1 |
| • VOLVO VDS-4.5 | • DDC 93K222 | • Scania Low Ash / LDF-4 | |
| • CUMMINS CES 20086 | • MTU Type 3.1 | • MB 228.51/228.31 | |

SAE GRADE
0W30 - 0W40 - 5W30 - 5W40 - 10W30 - 10W40 - 15W40 - 20W50
E-FORCE PLATINUM HD / API: CK-4/SN
FULLY / SEMI SYN / MINERAL

DESCRIPTION

E-FORCE PLATINUM HD is an advanced synthetic heavy-duty diesel engine oil designed to enable extended oil drain intervals. It is specifically formulated to enhance engine life under the most demanding on and off-highway conditions while delivering superior performance in modern, high-output, low-emission engines equipped with EGR. E-FORCE PLATINUM HD is fully compatible with the latest exhaust after-treatment systems, including DPF, DOC, and SCR. Its excellent low-temperature fluidity and pumpability, combined with a cutting-edge additive system, ensure maximum wear protection and support extended engine durability.

MEETS OR EXCEED

- | | | | |
|---------------------|-----------------------|----------------------|----------------|
| • API CK-4/SN | • MB 228.31 | • FORD WSS-M2C171-F1 | • DDC 93K222 |
| • Caterpillar ECF-3 | • ACEA E9/E11-22 | • Mack EOS-4.5 | • MTU Type 2.1 |
| • VOLVO VDS-4.5 | • DEUTZ DQC III-18 LA | • MAN M3775 | • JASO DH-2 |
| • CUMMINS CES 20086 | • RENAULT RLD-3 | • MAN M3475 | • DTFR 15C100 |

SAE GRADE
0W30 - 0W40 - 5W30 - 5W40 - 10W30 - 10W40 - 15W40
E-FORCE UHPD / API: CJ-4
FULLY / SEMI SYNTHETIC

DESCRIPTION

E-FORCE UHPD is a synthetic, high-performance engine oil specifically designed for all on-highway heavy-duty diesel applications and is also compatible with most gas engines. Utilizing advanced "mid-SAPS" technology compliant with Euro VI standards, E-FORCE UHPD promotes extended engine life while maintaining the efficiency of after-treatment systems, including Diesel Particulate Filters (DPFs).

MEETS OR EXCEED

- | | | |
|---------------------|---------------------------|-------------------------|
| • API CJ-4 | • DEUTZ DQC IV-10 LA | • MAN M3677/M3691 |
| • Caterpillar ECF-3 | • RENAULT RLD-3 | • DDC 93K218 |
| • VOLVO VDS-4 | • Scania Low Ash, LDF-4 | • MTU Type 2.1/3.1 |
| • CUMMINS CES 20081 | • JASO DH-2 | • MAN M3271/M3477/M3575 |
| • Mack EO-O PP | • MB 228.31/228.51/235.28 | |
| • ACEA E6/E8/E9/E11 | • VOITH Class B | |

SAE GRADE
0W40 - 5W40 - 10W30 - 10W40

E-FORCE PLUS / API: CJ-4/SN
FULLY / SEMI SYN / MINERAL

DESCRIPTION

E-FORCE PLUS is a synthetic, high-performance heavy-duty diesel engine oil designed to extend engine life and improve fuel economy in modern diesel engines operating in extreme conditions. Meeting the API CJ-4 specification, E-FORCE PLUS uses cutting-edge technology to deliver outstanding performance in low-emission engines, including those equipped with Exhaust Gas Recirculation (EGR), Diesel Particulate Filters (DPFs), and Diesel Oxidation Catalysts (DOCs).

MEETS OR EXCEED

- | | | |
|--------------------------|-----------------|----------------------|
| • API CJ-4/SN | • MAN M3477 | • CUMMINS CES 20081 |
| • ACEA E9/E11-22 | • VOLVO VDS-4 | • DEUTZ DQC III-18LA |
| • MB 228.31(DTFR 15C100) | • RENAULT RLD-3 | • FORD WSS-M2C171-F1 |
| • Caterpillar ECF-3 | • DDC 93K218 | • MTU Type 3.1 |

SAE GRADE
0W30 - 0W40 - 5W30 - 5W40 - 10W30 - 10W40 - 15W40 - 20W50
E-FORCE XHPD / API: CI-4
FULLY / SEMI SYNTHETIC

DESCRIPTION

E-FORCE XHPD is a synthetic, extra high-performance diesel engine oil engineered to deliver exceptional lubrication for modern, high-performance diesel engines operating in demanding on and off-highway applications. Blended with premium base oils, it offers excellent low-temperature fluidity, high-temperature viscosity retention, volatility control, and improved fuel economy. These base oils are enhanced with an advanced additive system that provides superior control over oil thickening caused by soot buildup and high-temperature oxidation. E-FORCE XHPD is formulated to support extended oil drain intervals in modern diesel engines.

MEETS OR EXCEED

- | | | | |
|---------------|----------------|------------------------|--------------|
| • API CI-4 | • MAN M3277 | • MACK EO-M Plus | • MTU Type 3 |
| • ACEA E7, E4 | • VOLVO VDS-3 | • CUMMINS CES 20077/78 | |
| • DTFR 15B120 | • Scania LDF-2 | • RENAULT RXD/RLD2 | |

SAE GRADE
0W40 - 5W40 - 10W40
E-FORCE LE / API: CI-4
FULLY / SEMI SYNTHETIC

DESCRIPTION

E-FORCE LE is a synthetic, extra high-performance "low SAPS" diesel engine oil designed to protect high-performance diesel engines operating in severe conditions. It meets the latest heavy-duty truck OEM specifications for engines that comply with the Euro VI EU emission standard. E-FORCE LE is highly recommended for EGR diesel engines equipped with aftertreatment systems such as Diesel Particulate Filters (DPFs) and SCR NOx reduction systems.

MEETS OR EXCEED

- | | | | |
|---------------------------|-------------------------|------------------------|-----------------|
| • API CI-4 | • VOLVO VDS-3 | • DEUTZ DQC III-10 LA | • Voith Class B |
| • ACEA E6/E8 | • RENAULT RLD2/RXD/RGD | • CUMMINS CES 20076/77 | |
| • Daimler MB 15C110/226.9 | • MTU Type 3.1 | • MACK EO-N | |
| • MAN M3477/M3271-1 | • DAF Meet Requirements | • JASO DH-2 | |

SAE GRADE
5W30 - 10W30 - 10W40
E-FORCE LDF3 / API: CK-4/SN
SEMI SYNTHETIC

DESCRIPTION

E-FORCE LDF3 is a synthetic, extra high-performance diesel engine oil formulated to deliver exceptional lubrication and protection for modern, high-performance diesel engines operating in demanding on and off-highway conditions. Blended with premium base oils and fortified with an advanced additive system, E-FORCE LDF3 supports long drain intervals in modern diesel engines. It is recommended for Euro VI and earlier engine models from most manufacturers.

MEETS OR EXCEED

- | | | | |
|----------------------|----------------------|--------------------|----------------------|
| • API CF | • DAF Extended Drain | • MTU Type 3 | • FORD WSS-M2C212-A1 |
| • ACEA E7/E4 | • MAN M 3277 | • Mack EO-M Plus | • VOITH Class B |
| • DTFR 15B120/235.28 | • CUMMINS CES 20077 | • DEUTZ DQC III-10 | • IVECO |
| • Scania LDF-3 | • RENAULT RLD2/RXD | • VOLVO VDS-3 | |

SAE GRADE
10W40

E-FORCE MAX / API: CI-4 Plus/SL

SEMI SYNTHETIC / MINERAL


DESCRIPTION

E-FORCE MAX is a heavy-duty engine oil that delivers superior lubrication for today's diesel and gasoline engines operating in extreme conditions. Formulated with advanced additives and synthetic base oils, it meets current API and OEM requirements for volatility and oxidation resistance. E-FORCE MAX complies with API CI-4 Plus standards, offering enhanced oxidation stability, soot control, reduced roller follower wear, and minimized aeration.

MEETS OR EXCEED

- API CI-4 Plus /SL
- ACEA E7
- DTFR 15B110
- MAN M3275
- VOLVO VDS-4
- DEUTZ DQC III-10
- MIL-PRF-2104G
- MACK EO-N Premium Plus
- CUMMINS CES 20081
- RENAULT RLD3
- DDC 93K215
- Allison C4

SAE GRADE

10W40 - 15W40 - 15W50

E-FORCE HT-PLUS / API: CJ-4/CI-4+/CI-4

MINERAL


DESCRIPTION

E-FORCE HT-PLUS is a versatile and comprehensive heavy-duty engine oil designed to meet the diverse needs of heavy-duty applications across industries such as trucking, mining, construction, quarrying, and agriculture. It provides exceptional protection for the most demanding diesel engines from manufacturers like Caterpillar, Cummins, Detroit, Mack, Mercedes-Benz, RENAULT, MAN, Navistar, VOLVO, and others. E-FORCE HT-PLUS is recommended for Euro V and VI VOLVO engines and off-highway engines meeting EU Stage IV and EPA Tier IV standards, equipped with DPFs and requiring CJ-4/E9-12/VDS-4/Cat ECF-3 lubricants.

MEETS OR EXCEED

- API CJ-4/CI-4+/CI-4
- ACEA E9/11-22
- DTFR 15B1101
- MAN M3575
- VOLVO VDS-4
- DEUTZ DQC III-10 LA
- JASO DH2
- CUMMINS CES 20081
- Global DHD1
- RENAULT RLD3
- MTU Type 2.1
- MACK EO-O Premium Plus

SAE GRADE

15W40

E-FORCE HD / API: CI-4/SL

SEMI SYNTHETIC / MINERAL


DESCRIPTION

E-FORCE HD is a high-performance diesel engine oil designed to support extended engine life and prolonged drain intervals, even in demanding operating conditions. Formulated with premium base oils and advanced additives, it provides excellent resistance to oxidation, soot, and wear. E-FORCE HD ensures superior piston cleanliness and minimizes sludge buildup, contributing to optimal engine performance and durability.

MEETS OR EXCEED

- API CI-4/SL
- ACEA E7
- ACEA A3/B4
- DTFR 15B110 / 229.1
- MAN M3275-1
- DDC 93K215
- VOLVO VDS-3
- DEUTZ DQC III-10
- JASO DH1
- MACK EO-M
- CUMMINS CES 20076/20077/20078
- Global DHD1
- RENAULT RLD2
- MTU Type 2
- Allison C4
- Caterpillar ECF 1a, ECF 2

SAE GRADE

10W40 - 15W40

E-FORCE / API: CK-4/SL

FULLY / SEMI SYN / MINERAL


DESCRIPTION

E-FORCE is a synthetic, high-performance heavy-duty diesel engine oil designed to extend engine life and enable extended drain intervals, even under severe operating conditions. Its high Total Base Number (TBN) effectively counteracts the damaging effects of sulfur present in low-quality diesel fuel. E-FORCE delivers outstanding performance in modern low-emission engines while also supporting the reliable operation of older, well-maintained engines.

MEETS OR EXCEED

- API CI-4/SL
- ACEA E7, A3/B3/B4
- DTFR 15B110 / 229.1
- MAN M3275-1
- VOLVO VDS-3
- DEUTZ DQC III-10
- JASO DH1
- MACK EO-N
- CUMMINS CES 20076/20077/78
- Global DHD-1
- RENAULT RLD-2
- MTU Type 2
- Allison C4
- Caterpillar ECF 1a, ECF 2
- DDC 93K215

SAE GRADE

0W30 - 0W40 - 5W30 - 5W40 - 10W30 - 10W40 - 15W40 - 20W40 - 20W50

E-FORCE X9 / API: CH-4/SJ
FULLY / SEMI SYN / MINERAL

DESCRIPTION

E-FORCE X9 is formulated with premium synthetic base stocks and a proprietary, balanced additive system that includes metallic detergents, dispersants, and multi-purpose inhibitors. This advanced oil delivers exceptional control over oil thickening caused by soot accumulation and high-temperature oxidation. It also offers outstanding protection against varnish deposits and corrosion, ensuring long-lasting engine performance and reliability.

MEETS OR EXCEED

- | | | | |
|---------------|---------------------|------------------|---------------------|
| • API CH-4/SJ | • ACEA E7, A3/B3/B4 | • MTU Type 2 | • CUMMINS CES 20076 |
| • DTFR 15B110 | • VOLVO VDS-2 | • JASO DH1 | • DFS 93K215 |
| • MAN 3275 | • RENAULT RLD2 | • Mack EO-M/EO-L | • DQC III-10 |

SAE GRADE

0W30 - 0W40 - 5W30 - 5W40 - 10W30 - 10W40 - 15W40
15W50 - 20W40 - 20W50 - 20W60 - 40 - 50

E-FORCE X7 / API: CG-4/SJ
FULLY / SEMI SYN / MINERAL

DESCRIPTION

E-FORCE X7 is a fully synthetic diesel engine oil specifically designed to meet the demanding performance requirements of high-powered turbocharged engines from leading automobile manufacturers. This fuel-efficient oil reduces maintenance costs for machines and engines while providing excellent resistance to oil thickening, as well as carbon, varnish, and sludge deposit formation. E-FORCE X7 also helps extend engine life, ensuring optimal performance and reliability.

MEETS OR EXCEED

- | | | | |
|---------------|--------------|--------------|--------------|
| • API CG-4/SJ | • ACEA A3/B4 | • VOLVO VDS | • MACK EO-L |
| • DTFR 15B110 | • MAN 3275 | • MTU Type-2 | • Allison C4 |

SAE GRADE

0W30 - 0W40 - 5W30 - 5W40 - 10W30 - 10W40 - 15W40
15W50 - 20W40 - 20W50 - 20W60 - 40 - 50

E-FORCE X5 / API: CF-4/SJ
SEMI SYNTHETIC / MINERAL

DESCRIPTION

E-FORCE X5 is a high-performance diesel engine oil designed to meet the demands of high-power engines. It features an advanced active-detergent system that ensures pistons and engine components stay clean, providing superior protection against wear for extended engine life. Additionally, it prevents deposit formation, ensuring efficient engine performance. E-FORCE X5 is specially formulated to meet the requirements of diesel engines from manufacturers across the US, Europe, and Japan.

MEETS OR EXCEED

- | | | | |
|---------------|---------------------|--------------|-------------------|
| • API CF-4/SJ | • ACEA E2-96, A3/B3 | • MAN 3275-1 | • MACK EO/K2 |
| • MB 228.2 | • MTU Type-2 | • VOLVO VDS | • CES 20075/74/73 |

SAE GRADE

10W30 - 10W40 - 15W40 15W50 - 20W50 - 20W60
25W60 - 30 - 40 - 50

E-FORCE X3 / API: CF/SF
MINERAL

DESCRIPTION

E-FORCE X3 mineral engine oil is specially formulated for mixed fleet operations, offering versatility for both diesel engines and naturally aspirated gasoline engines in trucks and passenger cars. Blended with a carefully optimized combination of premium base oils and an advanced additive system, it is designed to perform reliably under harsh driving conditions. E-FORCE X3 delivers excellent thermal stability at high temperatures, ensuring consistent protection and performance.

MEETS OR EXCEED

- | | | | |
|--------------------|---------------|------------|--------------|
| • API CF/SF | • MB 228.2 | • CAT TO-2 | • MTU TYPE 1 |
| • ACEA E2-96/A3/B3 | • MIL-L-2104E | • MAN 270 | • ALLISON C4 |

SAE GRADE

15W40 - 15W50 - 20W50 - 20W60 - 30 - 40 - 50 - 60

E-FORCE X1 / API: CD/SF
MINERAL

DESCRIPTION

E-FORCE X1 is a heavy-duty mineral diesel engine oil designed with a precise blend of high-quality base oils and advanced additives. It offers reliable protection against rust and corrosion while delivering excellent thermal and oxidation stability. By effectively controlling sludge build-up and deposits, E-FORCE X1 helps extend equipment life and reduces maintenance costs, ensuring optimal engine performance.

MEETS OR EXCEED

- API CD/SF
- MIL-L-2104D

SAE GRADE

15W40 - 20W50 - 20W60 - 40 - 50 - 60

E-FORCE X / API: CC/SC
MINERAL

DESCRIPTION

E-FORCE X is a mineral multi-grade engine oil designed for the lubrication of diesel engines and naturally aspirated gasoline engines. It is ideal for use in commercial and passenger vehicles operating under mild driving conditions, providing reliable performance and protection.

MEETS OR EXCEED

- API CC/SC
- MIL-L-2104B

SAE GRADE

15W40 - 20W50 - 20W60 - 40 - 50



PCMO

ARCH SPARK / API: SP (RC)
FULLY / SEMI SYN / MINERAL

DESCRIPTION

ARCH SPARK engine oils are advanced passenger car motor oils specifically designed for modern, high-output turbocharged gasoline engines in passenger cars, SUVs, vans, and light-duty trucks. Engineered for exceptional engine protection, these premium oils feature ultra-pure base oils and a cutting-edge additive system. They deliver improved oxidation resistance, enhanced deposit and wear protection, excellent low-temperature performance, and better fuel economy, ensuring optimal engine performance and longevity.

MEETS OR EXCEED

- API SP (RC) / SN PLUS (RC)
- GM DEXOS1 GEN2
- ILSAC GF-6B (0W-16)
- CHRYSLER MS6395
- FORD - 947A (0W-20)
- FORD - 945A (5W-20)
- FORD - 946A (5W-30)
- ILSAC GF-6A

SAE GRADE

0W16 - 0W20 - 0W30 - 0W40 - 5W20 - 5W30 - 5W40
10W30 - 10W40 - 15W40 - 20W50

ARCH PLUS / API: SN/CF
FULLY / SEMI SYN / MINERAL

DESCRIPTION

ARCH PLUS is an advanced synthetic engine oil engineered to deliver exceptional protection for modern gasoline and diesel engines, including naturally aspirated and turbocharged engines with indirect or direct injection. It meets the latest industry standards for "Full SAPS" passenger car lubricants and outperforms conventional oils. ARCH PLUS offers enhanced oxidation resistance, superior deposit and wear protection, and excellent low-temperature performance, ensuring consistent and reliable engine operation throughout the oil's lifespan.

MEETS OR EXCEED

- API SN/CF
- ACEA A3/B4
- MB 226.5/229.3/229.5
- Porsche A40 (0W-40)
- RENAULT RN0700/RN0710
- VW 502 00 / 505 00
- PSA B71 2296 (5W-40)
- ACEA A1/B1 (0W-20) (5W-20)
- FORD WSS-M2C937-A (0W-40)
- FORD WSS-M2C925-B (5W-20)
- LAND ROVER GRIT STJLR.03.5004 (5W-20)

SAE GRADE

0W20 - 0W30 - 0W40 - 5W20 - 5W30 - 5W40 - 10W30 - 10W40 - 15W40 - 20W50

ARCH PLUS PAO / API: SN/CF
FULLY SYNTHETIC

DESCRIPTION

ARCH PLUS PAO is a premium-quality lubricant formulated with advanced PAO (Polyalphaolefin) base stocks, providing exceptional engine protection for modern gasoline and diesel engines. Suitable for naturally aspirated and turbocharged engines with indirect or direct injection, it meets the latest industry standards for "Full SAPS" passenger car lubricants and exceeds the performance of conventional oils. ARCH PLUS PAO delivers enhanced oxidation resistance, superior deposit and wear protection, and outstanding low-temperature performance, ensuring long-lasting engine efficiency and reliability.

MEETS OR EXCEED

- API SN/CF (0W-40)
- API SN/SL/CF (0W-30)
- ACEA A3/B4
- VOLVO 95200356 (0W-30)
- Porsche A40 (0W-40)
- MB 226.5/229.3/229.5
- RENAULT RN0700/RN0710
- VW 502 00/505 00
- BMW LL-01
- FORD WSS-M2C-937-A (0W-40)

SAE GRADE

0W30 - 0W40

ARCH FE / API: SN/CF
FULLY SYNTHETIC

DESCRIPTION

ARCH FE is a premium, fully synthetic, fuel-efficient engine oil designed to deliver extended engine life and superior protection for various vehicle types and ages. Engineered for optimal performance, it ensures enhanced protection across a wide temperature range, making it suitable for diverse driving conditions.

MEETS OR EXCEED

- API SN/CF (5W-20)
- FORD WSS-M2C925-B (5W-20)
- VOLVO VCC 95200377 (0W-30)
- API SN/SL/CF (0W-30, 5W-30)
- FORD WSS-M2C913-D (5W-30)
- MB 229.6 (0W-30, 5W-30)
- ACEA A5/B5-22 (5W-20, 0W-30, 5W-30)
- RENAULT RN0700 (0W-30, 5W-30)
- LAND ROVER GRIT STJLR.03.5004 (5W-20)
- LAND ROVER GRIT STJLR.03.5003 (5W-30)

SAE GRADE

0W30 - 0W40 - 5W20 - 5W30

ARCH C2 ECO / API: SN/CF

FULLY SYNTHETIC


DESCRIPTION

ARCH C2 ECO is a fully synthetic, fuel-efficient engine oil designed for modern engines requiring low friction, low HTHS viscosity, and Mid SAPS formulations. Crafted with high-quality base oils and cutting-edge additive technology, it delivers exceptional aging stability, optimal wear protection, fuel economy, and superior cold-start performance throughout the oil change interval. ARCH C2 ECO is fully compliant with Euro VI emission standards, ensuring optimal performance and environmental compatibility.

MEETS OR EXCEED

- API SN/CF
- API ACEA C2-22
- FIAT 9.555 35-GS1/DS1
- FORD WSS M2C 950A (0W-30)
- RENAULT RNO700
- CHRYSLER MS-13340/ MS-90047 (0W-30)
- PSA B71 2290-2017 (5W-30)
- LAND ROVER GRIT STJLR.03.5007 (0W-30)

SAE GRADE

0W30 - 5W30

ARCH SPECIFIC B71 2312

FULLY SYNTHETIC


DESCRIPTION

ARCH SPECIFIC B71 2312 is a high-performance, reduced SAPS engine oil tailored for modern PSA Group (PEUGEOT and Citroën) vehicles equipped with "Blue HDI" diesel engines and SCR (Selective Catalytic Reduction) systems. It meets the stringent requirements of the B71 2312 specification and complies with EURO 4, EURO 5, and EURO 6 emission standards. This oil is formulated to maintain the efficiency of exhaust emission reduction systems in both diesel and gasoline engines. Its fully synthetic base ensures excellent thermal stability, superior wear protection, and prevents varnish and sludge buildup, keeping the engine clean and running efficiently.

MEETS OR EXCEED

- ACEA C2-22
- PSA B71 2312

SAE GRADE

0W30

ARCH GT1 / API: SN

FULLY SYNTHETIC


DESCRIPTION

ARCH GT1 is a premium fully synthetic engine oil designed to deliver exceptional performance for high-powered engines. It offers excellent oil film strength, superior engine cleanliness, robust wear protection, and long-lasting durability. Specially formulated for the latest generation of gasoline and diesel engines—naturally aspirated or turbocharged, and direct or indirect injection—it meets the ACEA C3 specification. ARCH GT1 is fully compliant with EURO VI emission standards, ensuring optimal engine performance and environmental compatibility.

MEETS OR EXCEED

- API SN
- PORSCHE C40
- BMW LL-04
- ACEA C3-22
- VW 511 00
- RENAULT RN 0700/0710
- FIAT 9.55535-S2/9.55535-T2
- GM DEXOS 2
- MB 229.31, 229.52, 226.5

SAE GRADE

0W40 - 5W40

ARCH C1 ULTRA

FULLY SYNTHETIC


DESCRIPTION

ARCH C1 ULTRA is a next-generation, low SAPS fully synthetic engine oil tailored for modern gasoline and diesel engines equipped with advanced after-treatment systems. It delivers exceptional performance across a wide range of operating temperatures, ensuring long-term engine protection. The low SAPS formulation helps extend the lifespan and maintain the efficiency of after-treatment systems, making it an ideal choice for vehicles powered by both diesel and gasoline engines.

MEETS OR EXCEED

- ACEA C1-22
- LAND ROVER GRIT STJLR.03.5005
- FORD WSS-M2C934-B
- JASO DL-1

SAE GRADE

5W30

ARCH SPECIFIC RN17

FULLY SYNTHETIC


DESCRIPTION

ARCH SPECIFIC RN17 is a premium high-performance engine oil specifically formulated to meet the RN17 specification for RENAULT vehicles, including RENAULT, Dacia, and Samsung models equipped with TGDl and EURO VI engines. Its 100% synthetic base stock ensures excellent thermal stability and low volatility, providing exceptional resistance to varnish and sludge formation while maintaining engine cleanliness. The outstanding oxidation resistance of ARCH SPECIFIC RN17 supports extended oil drain intervals as recommended by the manufacturer. This lubricant meets stringent quality standards, delivering optimal engine performance and prolonged component life through fast and effective lubrication across a wide temperature range.

MEETS OR EXCEED

- ACEA C3-22
- RENAULT RN1
- MB 226.52

SAE GRADE
5W30

ARCH SPECIFIC RN17 FE / API: SN

FULLY SYNTHETIC


DESCRIPTION

ARCH SPECIFIC RN17 FE is an advanced low-friction engine oil specially formulated for RENAULT vehicles (RENAULT, Dacia, Samsung) with gasoline and diesel engines that require a RENAULT RN17 FE specification lubricant. Featuring mid-SAPS technology and unique low-friction properties, it reduces fuel consumption and minimizes pollutant emissions. The reduced levels of Sulfated Ash, Phosphorus, and Sulfur ensure optimal protection and extended lifespan for modern after-treatment systems such as Diesel Particulate Filters (DPF), Selective Catalyst Reduction (SCR), and Gasoline Particulate Filters (GPF).

MEETS OR EXCEED

- API SN
- ACEA C5-22
- RENAULT RN17 FE

SAE GRADE
0W20

ARCH EC PLUS / API: SP

FULLY / SEMI SYN / MINERAL


DESCRIPTION

ARCH EC PLUS oils are fully synthetic mid-SAPS passenger car motor oils (PCMO) that meet API and ACEA specifications. These oils are specifically designed to deliver advanced protection against low-speed pre-ignition (LSPI) and timing chain wear. They also provide enhanced high-temperature deposit protection for pistons and turbochargers while ensuring superior control of sludge and varnish, meeting the demands of modern engine technologies.

MEETS OR EXCEED

- API SP
- ACEA C2 (0W-30, 5W-30)
- ACEA C3 (0W-30, 0W-40, 5W-30, 5W-40)
- ACEA C5 (0W-20, 5W-20)
- MB 229.31 (0W-30, 0W-40, 5W-30, 5W-40)

SAE GRADE
0W20 - 0W30 - 0W40 - 5W20 - 5W30 - 5W40

ARCH EC / API: SN PLUS

FULLY / SEMI SYNTHETIC


DESCRIPTION

ARCH EC is a premium-quality engine lubricant designed for vehicles equipped with the latest Diesel Particulate Filters (DPFs) and Gasoline Catalytic Converters (CATs). Expertly engineered, it delivers superior cleaning power, exceptional wear protection, and outstanding overall performance, along with enhanced fuel economy benefits. ARCH EC offers improved oxidation resistance, superior deposit protection, and excellent low-temperature performance, ensuring reliable engine operation and longevity.

MEETS OR EXCEED

- API SN Plus
- ACEA C2/C3
- MB 229.31(5W-40)

SAE GRADE
5W30 - 5W40 - 10W30

ARCH LS

FULLY SYNTHETIC


DESCRIPTION

ARCH LS is a high-performance, low SAPS synthetic engine oil designed to meet the stringent requirements of Euro IV and Euro V exhaust emission standards. It provides dependable long-life engine protection and performance for gasoline and diesel passenger cars, as well as diesel light vans equipped with Three-Way Catalysts (TWC) or Diesel Particulate Filters (DPF). ARCH LS ensures optimal engine efficiency while maintaining compliance with modern emission regulations.

MEETS OR EXCEED

- ACEA C4
- RENAULT RN 0720
- MB 226.51/229.51

SAE GRADE

5W30

ARCH GTR / API: SN

FULLY SYNTHETIC


DESCRIPTION

ARCH GTR is a fully synthetic, next-generation engine oil specifically formulated to meet stringent OEM specifications, including those of Volkswagen and AUDI. It is designed for use in gasoline and diesel engines of passenger cars and light vans equipped with Diesel Particulate Filters (DPF) and Three-Way Catalytic Converters (TWC). ARCH GTR delivers exceptional engine protection, compatibility with modern emission systems, and reliable performance for advanced vehicle technologies.

MEETS OR EXCEED

- API SN
- ACEA C3
- Porsche C30
- MB 229.31/229.51
- VW 504 00 / 507 00
- BMW Long life-04

SAE GRADE

0W30 - 5W30

ARCH XTL / API: SN PLUS/SP

FULLY SYNTHETIC


DESCRIPTION

ARCH XTL is a premium, fully synthetic MID SAPS lubricant designed for gasoline and diesel engines, including those meeting the ACEA C2/C3 standard. It is specifically formulated to minimize pollutant emissions such as HC, NO_x, CO, and particulate matter, while ensuring the protection and longevity of after-treatment systems like Particulate Filters (GPF, DPF) and Three-Way Catalysts (TWC). Combining advanced synthetic base oils with state-of-the-art additive technology, ARCH XTL delivers outstanding wear protection, reduced oil and fuel consumption, and superior engine performance.

MEETS OR EXCEED

- API SN Plus / SP
- ACEA 2016 C3/C2 (5W-30)
- ACEA 2016 C3 (5W-40)
- BMW LL-04
- OPEL OV 040 1547
- MB 229.51/229.52
- RENAULT RN0700/RN0710

SAE GRADE

5W30 - 5W40

ARCH MSP / API: SN PLUS/SP

FULLY SYNTHETIC


DESCRIPTION

ARCH MSP is a premium low-friction motor oil specifically engineered for high-performance downsized engines delivering maximum power output. Designed for extreme fuel economy and reduced CO₂ emissions, it ensures optimal lubrication, exceptional film stability, and minimal wear and deposits, even under extreme loads. Ideal for engines equipped with start/stop systems, ARCH MSP guarantees maximum performance and efficiency, coupled with low fuel consumption.

MEETS OR EXCEED

- API SN PLUS/ SP
- ACEA C5-22 (0W-20)
- ACEA C2-22 (5W-30, 0W-30)
- MB229.61 (5W-30, 0W-30)
- MB229.71 (0W-20)
- BMW LL-17 FE+ (0W-20)
- BMW LL-12 FE (0W-30)
- GM DEXOS D (0W-20)
- LAND ROVER GRIT STJLR.03.5006 (0W-20)
- OPEL OV 040 1547 (5W-30, 0W-30, 0W-20)
- VOLVO VCC RBSO-2AE (0W-20)

SAE GRADE

0W-20 - 0W30 - 5W30

ARCH C5 / API: SN PLUS
FULLY SYNTHETIC

DESCRIPTION

ARCH C5 is a fully synthetic MID SAPS engine oil designed for cutting-edge engine technologies. It provides exceptional wear protection, robust durability, and outstanding fuel economy performance for modern diesel and gasoline engines equipped with Diesel Particulate Filters (DPF), Gasoline Particulate Filters (GPF), and Catalytic Converters. ARCH C5 meets Euro VI emission standards, ensuring superior performance and compatibility with advanced emission control systems.

MEETS OR EXCEED

- API SN Plus
- ACEA C5
- VW 508 00 / 509 00
- VW TL52577
- Porsche C20

SAE GRADE
OW20
ARCH XP / API: SN Plus (RC) / SP (RC)
FULLY / SEMI SYN / MINERAL

DESCRIPTION

ARCH XP oils are crafted with high-performance base stocks and enhanced by a proprietary advanced additive system to deliver exceptional, long-lasting engine protection. These oils are engineered to resist oil breakdown, maximizing wear protection and preventing harmful sludge formation during extended oil change intervals. Specifically designed to safeguard against LSPI (low-speed pre-ignition) in TGD engines, ARCH XP oils also help mitigate turbo coking and deposit buildup, which can lead to elevated turbocharger temperatures or bearing failures, ensuring reliable performance in modern engine technologies.

MEETS OR EXCEED

- API SN Plus (RC) / SP (RC)
- API SN Plus/SP (5W40, 10W40, 15W40, 20W50)
- ILSAC GF-6B (0W-16)
- ILSAC GF-5 (0W-20, 0W-30, 5W-20, 5W-30, 10W-30)
- FORD 947A (0W-20)
- FORD 945A(5W-20)
- FORD 946A (5W-30)
- GM DEXOS 1 GEN 2 (0W20, 5W20, 5W30, 10W30)
- CHRYSLER MS6094M (0W20, 5W20, 5W30, 10W30)

SAE GRADE
OW16 - OW20 - OW30 - 5W20 - 5W30 - 5W40 - 10W30 - 10W40 - 15W40 - 20W50
ARCH PRO / API: SN (RC)
FULLY / SEMI SYN / MINERAL

DESCRIPTION

ARCH PRO oils are formulated using premium-quality base stocks and advanced performance additives to deliver exceptional engine protection and performance under diverse operating conditions. Ideal for high-performance gasoline engine cars, ARCH PRO is recommended for vehicles equipped with direct-injection, multi-valve, and turbocharger technologies, ensuring optimal engine efficiency and durability.

MEETS OR EXCEED

- API SN/RC GF-5 (0W20, 5W20, 5W30, 10W30)
- API SN
- ILSAC GF-5 (0W20, 5W20, 5W30, 10W30)
- FORD 947A (0W20)
- FORD 945A(5W20)
- FORD 946A (5W30)
- GM DEXOS 1 (0W20, 5W20, 5W30)
- CHRYSLER MS6094M (0W20, 5W20, 5W30, 10W30)

SAE GRADE
OW16 - OW20 - 5W20 - 5W30 - 5W40 - 10W30 - 10W40 - 15W40 - 20W50
ARCH RX / API: SN/CF
FULLY / SEMI SYN / MINERAL

DESCRIPTION

ARCH RX is a premium lubricant enhanced with a proven metallo-organic anti-wear additive system, delivering exceptional protection for engines under all operating conditions. It provides outstanding wear control, even in advanced valve train mechanisms, including those with variable valve timing. Expertly engineered, ARCH RX ensures superior cleaning power, robust wear protection, and exceptional performance. Its resistance to degradation allows for extended intervals between oil changes, offering both convenience and efficiency.

MEETS OR EXCEED

- API SN/CF
- ILSAC GF-5 (0W-20, 5W-20)
- VW 502.00 / 505.00 (5W-30, 5W-40)
- ACEA A3/B4-12
- MB 229.3
- RENAULT RN 700/710

SAE GRADE
OW20 - 5W20 - 5W30 - 5W40 - 10W30 - 10W40 - 15W40 - 20W50

ARCH / API: SM/CF
FULLY / SEMI SYN / MINERAL

DESCRIPTION

ARCH is a premium synthetic multi-grade lubricant engineered to deliver superior performance and protection for gasoline engines in passenger cars, sport utility vehicles, vans, and light trucks. Meeting API SM quality standards, it provides advanced anti-wear protection and guards against sludge and deposit formation. ARCH is designed to enhance oxidation resistance, reduce deposits, minimize wear, and deliver excellent low-temperature performance throughout the oil's lifespan.

MEETS OR EXCEED

- API SM/CF
- ACEA A3/B3
- ACEA A1/B1 (0W-20, 5W-20)
- VW 501.01 / 505.00
- RN 700, RN 710
- MB 229.3

SAE GRADE

0W20 - 0W30 - 5W20 - 5W30 - 5W40 - 10W30 - 10W40 - 15W40 - 20W50

ARCH 9000 / API: SL/CF
FULLY / SEMI SYN / MINERAL

DESCRIPTION

ARCH 9000 is a synthetic motor oil formulated with advanced additive technology to actively maintain engine cleanliness while delivering superior protection. Engineered for turbocharged, multi-valve, and direct-injection engines, it performs exceptionally well under demanding conditions such as highway driving and heavy urban traffic, in all seasons. ARCH 9000 ensures optimal engine performance and durability, even in the most challenging environments.

MEETS OR EXCEED

- API SL/CF
- ACEA A3/B3
- ACEA A5/B5 (5W-20)
- MB 229.3/226.5
- JASO MA2
- RENAULT RN0700/0710
- VW 501.01 / 505

SAE GRADE

0W30 - 0W40 - 5W20 - 5W30 - 5W40 - 10W30 - 10W40 - 10W60
15W40 - 20W50 - 20W60 - 25W60

ARCH 7000 / API: SJ/CF
FULLY / SEMI SYN / MINERAL

DESCRIPTION

ARCH 7000 is a synthetic engine oil, crafted with advanced base stocks and premium additive technology. It provides exceptional engine protection while preventing the buildup of deposits and sludge. Designed for engines operating under all driving conditions, whether on highways or in urban environments, ARCH 7000 ensures reliable performance and extended engine life.

MEETS OR EXCEED

- API SJ/CF
- ACEA A1/B1 (5W-30)
- ACEA A3/B3 (5W-40)
- ILSAC GF-2
- FORD WSS-M2C-913A/913B

SAE GRADE

5W30 - 5W40 - 10W30 - 10W40 - 10W60 - 15W40 - 20W50 - 20W60 - 40 - 50

ARCH 5000 / API: SG/CF
SEMI SYNTHETIC / MINERAL

DESCRIPTION

ARCH 5000 is a high-performance semi-synthetic oil designed for gasoline and diesel engines. It features excellent aging resistance, effectively minimizing carbon deposits and high-temperature lacquer formation. This oil ensures reliable lubrication of engine components and incorporates low-ash additives to extend the lifespan of catalytic converters, making it an ideal choice for long-lasting engine performance and efficiency.

MEETS OR EXCEED

- API SG/CF

SAE GRADE

10W30 - 10W40 - 10W60 - 15W40 - 20W50 - 20W60 - 40 - 50

ARCH 3000 / API: SF/CD
MINERAL

DESCRIPTION

ARCH 3000 is a versatile, high-quality mineral engine oil designed for use in passenger cars, light trucks, and farm equipment, particularly in situations where a single type of oil is preferred. Formulated with premium mineral base stocks and an advanced additive system, this oil contains inhibitors to effectively combat acid formation, oxidation, and foaming. ARCH 3000 ensures reliable performance and protection for engines across a wide range of applications.

MEETS OR EXCEED

- API SF/CD
- MIL-L-2104A

SAE GRADE

15W40 - 20W50 - 20W60 - 40 - 50

ARCH SPECIFIC LL-01 FE
FULLY SYNTHETIC

DESCRIPTION

ARCH SPECIFIC LL-01 FE is a premium quality lubricant engineered for high-temperature resistance, ensuring enhanced oil consumption control and reduced wear due to its superior lubricating properties. This advanced formulation delivers significant fuel economy benefits while providing excellent oil flow, instant oil pressure, faster engine rev-up, and quicker engine warm-up. It is designed to optimize engine performance and efficiency across a wide range of driving conditions.

ARCH SPECIFIC LL-01 FE is a premium quality lubricant engineered to deliver excellent engine performance and protection. Its advanced formulation helps reduce fuel consumption, thereby lowering greenhouse gas (CO2) emissions and supporting environmental sustainability. This oil is designed for drivers who prioritize efficiency and environmental responsibility.

MEETS OR EXCEED

- ACEA A5/B5
- BMW LL-01 FE

SAE GRADE

0W30



MCO

MOTOX 4T XP / API: SN
FULLY / SEMI SYN / MINERAL

DESCRIPTION

MOTOX 4T XP is a high-performance engine oil engineered to meet the rigorous demands of motorcycle engines. Designed primarily for high-performance, on-road 4-cycle sport bikes, it is also suitable for various on and off-road 4-cycle motorcycles. This oil delivers exceptional protection, especially for 4-cycle V-Twin engines, which are often air-cooled and operate at higher temperatures. MOTOX 4T XP ensures outstanding performance in integrated engine/transmission lubrication systems or systems where engine lubrication is separate from the transmission.

MEETS OR EXCEED

- API SN
- JASO MA2

SAE GRADE

5W40 - 10W30 - 10W40 - 10W50 - 10W60 - 15W40 - 15W50 - 20W40 - 20W50

MOTOX 4T MAX / API: SM
FULLY / SEMI SYN / MINERAL

DESCRIPTION

MOTOX 4T MAX is a premium engine oil engineered for 4-stroke motorcycles. Its advanced synthetic blend, featuring the 4T MAX formulation, provides superior performance compared to conventional motorcycle oils of similar viscosities. It ensures excellent flow at low temperatures to minimize engine wear during start-up and delivers exceptional resistance to oxidation and volatilization at high temperatures, extending oil life. MOTOX 4T MAX offers comprehensive protection for the engine, clutch, and gears, ensuring optimal performance across these critical motorcycle components.

MEETS OR EXCEED

- API SN
- JASO MA2

SAE GRADE

5W30 - 10W30 - 10W40 - 10W50 - 10W60 - 15W50 - 20W40 - 20W50

MOTOX 4T PREMIUM / API: SL
FULLY / SEMI SYN / MINERAL

DESCRIPTION

MOTOX 4T PREMIUM is a top-tier engine oil crafted for 4-stroke motorcycles. Formulated with premium quality base oils and advanced additives, it enhances the performance and power of your machine, even in the most challenging riding conditions. Its specialized anti-friction technology is designed to boost acceleration compared to conventional motorcycle oils. MOTOX 4T PREMIUM provides superior protection for the engine, clutch, and gears, ensuring optimal performance and reliability across these critical motorcycle components.

MEETS OR EXCEED

- API SL
- JASO MA2

SAE GRADE

5W40 - 10W30 - 10W40 - 10W60 - 20W40 - 20W50 - 25W60

MOTOX 4T / API: SJ
FULLY / SEMI SYN / MINERAL

DESCRIPTION

MOTOX 4T is specially designed for high-performance 4-stroke motorcycles, delivering exceptional power efficiency and acceleration. It surpasses fuel economy and engine cleaning standards while providing outstanding engine protection and optimal clutch performance under all driving conditions. MOTOX 4T ensures sustained high engine power and supports extended drain intervals for enhanced convenience and reliability.

MEETS OR EXCEED

- API SJ
- JASO MA

SAE GRADE

5W40 - 10W30 - 10W40 - 10W60 - 20W40 - 20W50 - 25W60

MOTOX 4T CLASSIC / API: SF

SEMI SYN / MINERAL


DESCRIPTION

MOTOX 4T CLASSIC is a versatile multi-grade motor oil designed for four-stroke engines in motorcycles, scooters, and mopeds. Formulated with high-quality base oils and a carefully balanced additive system, it ensures reliable performance. MOTOX 4T CLASSIC delivers enhanced detergency, superior anti-wear and anti-foam properties, and excellent resistance to oxidation and corrosion, ensuring optimal engine protection and longevity.

MEETS OR EXCEED

- API SF

SAE GRADE

10W30 - 10W40 - 10W50 - 15W40 - 15W50 - 20W40 - 20W50

MOTOX 4T SYNTH HD / API: SN

FULLY SYNTHETIC


DESCRIPTION

MOTOX 4T SYNTH HD is a fully synthetic motorcycle oil designed for air- and water-cooled four-stroke engines, making it especially ideal for Harley-Davidson motorcycles. Formulated with premium base oils and high-quality additives, it provides superior lubrication, exceptional engine cleanliness, and optimal friction performance under all operating conditions. This oil is perfectly suited for use with or without a wet clutch, ensuring smooth and reliable performance.

MEETS OR EXCEED

- API SN
- JASO MA2

SAE GRADE

20W50

MOTOX 4T ULTRA / API: SG

FULLY / SEMI SYN / MINERAL


DESCRIPTION

MOTOX 4T ULTRA is a high-performance multi-grade oil designed for four-stroke engines in motorcycles, scooters, and mopeds. Formulated with premium-quality base oils and a balanced additive system from trusted manufacturers, it delivers enhanced detergency, anti-wear, and anti-foam properties. Additionally, it provides excellent resistance to oxidation and corrosion, ensuring reliable engine protection and performance.

MEETS OR EXCEED

- API SG
- JASO MA

SAE GRADE

5W30 - 10W30 - 10W40 - 10W50 - 15W40 - 15W50 - 20W40 - 20W50

MOTOX 2T / API: TC

MINERAL


DESCRIPTION

MOTOX 2T is a high-performance lubricant specifically formulated for two-stroke engines in motorcycles, scooters, and mopeds. It is fully compatible with lead-free fuels and utilizes advanced technology to deliver optimal performance. Combining highly refined base stocks with cutting-edge additive technology, MOTOX 2T is suitable for both oil-injected and pre-mixed gasoline/oil lubricated engines. It offers superior protection against exhaust emissions and prevents engine carbon deposits, ensuring efficient and reliable engine operation.

MEETS OR EXCEED

- API TC
- JASO FD
- ISO EGD

SAE GRADE

20

MOTOX SUPER SCOOTER / API: SL

SEMI SYNTHETIC



DESCRIPTION

MOTOX SUPER SCOOTER is crafted using premium-quality base stocks combined with advanced additives and a stable thermal detergent system to enhance engine cleanliness and durability. This lubricating oil minimizes friction while providing superior protection for motorcycle engines. As a JASO MB-certified lubricant, it ensures optimal engine performance and improved fuel efficiency for all scooters without a wet clutch.

MEETS OR EXCEED

- API SL
- JASO MB

SAE GRADE

10W30 - 10W40

MOTOX AIR FILTER OIL

FULLY SYNTHETIC



DESCRIPTION

MOTOX AIR FILTER OIL is specifically formulated for use with "wet type" foam air filters in both four-stroke and two-stroke engines. This advanced oil utilizes a precise blend of high-quality base oils and additives to deliver exceptional performance by effectively trapping airborne dirt and abrasive particles, preventing them from entering the fuel intake system and combustion chamber.

FEATURES & BENEFITS

- Developed to ensure excellent performance for motorcycle filters.
- Tested in both controlled field conditions and bench test procedures according to BSI 1701 (ISO 511).
- High filtering efficiency for extended filter and engine life.
- Maintains air flow for instant engine response and maximum power output.

MOTOX SHOCK ABSORBER OIL

FULLY SYNTHETIC



DESCRIPTION

MOTOX SHOCK ABSORBER OIL is a high-performance oil crafted with premium synthetic base oils and advanced additives to deliver exceptional damping performance for motorcycle shock absorbers. It features excellent viscosity-temperature stability, outstanding oxidation resistance, and superior anti-foam properties. Additionally, it ensures excellent seal compatibility, contributing to optimal shock absorber performance and longevity.

FEATURES & BENEFITS

- Increase the life of shock absorber
- Excellent seal compatibility
- Longer oil life
- Excellent damping effect
- Excellent low temperature properties



ATF

T-REX DCT / DUAL CLUTCH TRANSMISSIONS FLUID
SYNTHETIC

DESCRIPTION

T-REX DCT is a fully synthetic transmission fluid specially formulated for passenger cars and vans with Dual Clutch Transmissions (DCTs). Utilizing advanced synthetic technology, it provides superior protection for transmission components and ensures effective friction control. These key properties help maintain optimal efficiency and extend the durability of DCTs, making T-REX DCT a reliable choice for vehicles featuring dual-clutch systems.

MEETS OR EXCEED

- AUDI (VAG) S-TRONIC, G 009 317, G 052 171, G 052 178, G 052 182, TL 52 182, G 052 512, G 052 527, G 052 529, G 052 726, G 052798, G 055 512, G 055 529, G 060 726 G 070 726
- BMW DCTF-1, P/N 83 220 440 214, BMW MTF-LT-5, P/N 83 22 2167 666, BMW DTF 1, P/N 83 22 2 409 710, BMW MTF-LT-3, P/N 83 22 0 397 244, DKG, P/N 83 22 0 306 816, P/N 83 22 21 47 477, P/N 83 2221 48 578, P/N 83 22 21 48 579
- CITROËN DCS, PSA PART NUMBER 9734 S2, JWS 2271, 9730 A8, P/N 1618078480
- DS DCS, PSA PART NUMBER 9734 S2, JWS 2271, 9730 A8, P/N 1618078480
- FIAT 9.55550-MZ6, TUTELA TRANSMISSION GEAR FORCE, 9.55550-DA11, 9.55550-MZ2
- JAGUAR PENTOSIN FFL-3
- LEXUS LF, TOYOTA LV 75W MT, JWS 2271, 0888581001
- FORD POWER-SHIFT, WSS-M2C-936-A, P/N 1 490761, P/N 1 490 763, WSS-M2C-200-D2, WSS-M2C-200-D3, WSS-M2C-200-E1
- HONDA MTF-III
- MERCEDES-BENZ SLS A 001 989 86 03, MB 236.24
- MITSUBISHI DIAMOND QUEEN SSTF-1
- NISSAN GR6, NISSAN DCT FLUID, NISSAN LV MT-1
- PEUGEOT PSA PART NUMBER 9734S2, JWS2271, 9730 A8,
- PORSCHE PDK, PART NUMBER 043 207 29, P/N 043 207 30, P/N 000 043 20, P/N 999 917 546 00, PORSCHE TFO870, P/N 000.043.305.63, P/N 999.917.080.00
- RENAULT EDC, DC4, BOT 450
- SUZUKI P/N 99000-22B27-036
- TOYOTA LF, TOYOTA LV75W MT, JWS 2271, 0888581001
- VOLVO BOT 341, P/N 1161838, P/N 1161520-7
- API GL-4
- CASTROL BOT 118 PLUS, BOT 341, BOT 342A, BOT 350 M1, BOT 350 M3, BOT 450, TRANSMAX DUAL
- PENTOSIN FFL-2, FFL-3
- PETRONAS TUTELA TRANSMISSION GEAR FORCE
- SHELL TF 0870

T-REX CVT / CONTINUOUSLY VARIABLE TRANSMISSIONS
SYNTHETIC

DESCRIPTION

T-REX CVT is a premium fully synthetic transmission fluid designed for a wide range of passenger cars and vans. This advanced fluid offers excellent metal-to-metal frictional properties, effectively reducing belt and chain slippage to enhance transmission durability. It delivers superior anti-shudder performance while minimizing noise, vibration, and harshness for a smoother driving experience.

MEETS OR EXCEED

- CHRYSLER/DODGE/JEEP NS-2/CVT +4
- MAZDA CVTF 3320
- BMW MINI COOPER EZL799/799A/ZF CVT V1
- DAIHATSU TC
- NISSAN NS-1, NS-2, NS-3
- TOYOTA/LEXUS TC, FE
- HONDA HMMF / HCF-2 / Z1
- AUDI MULTITRONIC
- GM DEX-CVT
- HYUNDAI/KIA CVT-J1 / SP-III
- IDEMITSU CVTS-EX1
- SHELL GREEN 1V
- FORD CVT23, CVT30, WSS-M2C933-A
- DAIHATSU AMMIX DC/DFC/CVTF-DFE
- MB 236.2
- MITSUBISHI DIAQUEEN CVTF-J1/CVTF-J4/SP-III
- AUDI/VW TL 52180, G 052 180, G 052 516
- PUNCH CVT
- SUZUKI CVTF 3320, TC, NS-2, CVTF GREEN1, CVTF GREEN 2
- VAG TL 521 16 (G052 516) / TL 521 80 (G 052 180 A2)
- SUBARU ECVT / ICVT / ICVT FG / NS2 / LINEARTRONIC CVT CHAIN / LINEARTRONIC CVT II / HIGH TORQUE LINEARTRONIC

T-REX MULTI / DUAL CLUTCH TRANSMISSIONS FLUID
SYNTHETIC

DESCRIPTION

T-REX MULTI is a premium synthetic ATF designed for compatibility with a wide range of vehicles from different regions. It provides superior protection against corrosion and foam formation while offering excellent anti-oxidation and anti-wear properties. Engineered with advanced technology, T-REX MULTI also features specialized friction modifiers for optimized performance.

MEETS OR EXCEED

- ACURA ATF Z1 (EXCEPT CVTS)
- AUDI (VAG) TIP-TRONIC, G 052 025-A2, G 052 162 A1 / A2 / A6, G 052 990 A2, G 055 025 A2, G 055 005 A1 / A2 / A6
- BMW LT 71141, LA2634, ETL7045E, ETL8072B,
- BENTLEY # PY112995PA
- BMW LT 71141, LA2634, ETL7045E, ETL8072B
- CHRYSLER MS 7176, MS 7176D, MS 7176E, MS 9602, ATF+, ATF+2, ATF +3, ATF +4
- CITROËN Z 000169756, # 9730 AC, #9735-EJ, JWS 3309
- DAIMLER ATF +3, ATF +4
- FIAT 9.55550-AV1, 9.55550-AV2, 9.55550-AV4
- FORD MERCON, MERCON V, MERCON SP
- GENERAL MOTORS GM DEXRON III G, III H, GM DEXRON II D, II E,
- HONDA ATF Z1 (EXCEPT CVTS), # 082000-9001, ATF DW-1 (EXCEPT CVTS)
- HYUNDAI RED1, SP II, SP III, ATF 9638, # 040000C90SG
- INFINITI ATF FMS, MATIC S, MATIC D, MATIC-J, MATIC K, MATIC W
- ISUZU ATF Z1 (EXCEPT CVTS), H50235, SCS
- JAGUAR M1375.4, JLM 20237, JLM 20238, JAGUAR FLUID 8432
- KIA ATF SP-III, ATF SP-3, RED1, # UMO40 CH020
- LAND ROVER M1375.4, # TYK500050, STC 4863
- LEXUS ATF WS, ATF TYPE T-IV, JWS 3324, NWS 9638
- MASERATI # 231603
- MAZDA JWS 3317, ATF M-V, 6-SP AT, ATF F-1
- MERCEDES-BENZ MB 236.3, MB 236.5, MB 236.7, MB 236.9, MB 236.10, MB 236.11, MB 236.12, MB 236.14, MB 236.15, A0019892203
- MINI ASW 3309, # 83 22 0 402 413
- MITSUBISHI DIAMOND (USA) / DIA QUEEN PSF, ATF-PA, ATF-J2, ATF-J3, SP II, SP III, PSF 3, AYC FLUID
- NISSAN ATF FMS, MATIC S, MATIC D, MATIC J, MATIC K, MATIC W, ATF D3M
- PEUGEOT Z 000169756, # 9730 AC, #9735-EJ, JWS 3309
- PORSCHE # 999.917.547.00 (A2), # 043 205 28
- RENAULT DPO, ELFMATIC J6, RENAULTMATIC D2, RENAULTMATIC D3
- ROLLS ROYCE PL 31493PA
- SAAB JWS 3309, # 93 165 147
- SATURN T-IV, # 22686186
- SUBARU # KO410Y0700, ATF HP, SKU: SOA868V9241
- SUZUKI JWS 3314 / 3317 / 2384K
- TOYOTA ATF DIII, ATF WS, ATF TYPE T, TYPE T-II, TYPE T-III, TYPE T-IV, JWS 2312D, JWS 3309, JWS 3324, LF,
- VOLVO # 97342, # 1161521, # 1161540, # 97340
- VW (VAG) G 052 025-A2, G 052 162 A1 / A2 / A6, TL 52 162, G 052 990 A2, G 055 025 A2, G 055 005 A1 / A2 / A6
- AISIN WARNER JWS 3309, JWS 2312D, CLIP, FF ATF, AW-F21
- ALLISON C4, TES-295
- JALOS JASO 1A
- JATCO JF613E
- VOITH G607 (H55.6335XX)
- ZF TE-ML 03D / 04D / 09 / 14A / 14B / 16L / 17C
- AML # 4G4319A509/AA/S
- APPOLLOIL ATF RED1K
- CASTROL TRANSMAX J, TRANSMAX Z
- ESSO ATF LT 71141, JWS 3314
- FUCHS RAVE ATF 4400, RAVE 3353
- IDEMITSU K17, ATF HP
- MOBIL ATF 3309, ATF 3317
- PETRONAS TUTELA GI-V, TUTELA GI-VI, TUTELA TRANSMISSION FORCE4
- SHELL M-1375.4, LA 2634, ATF 3353, 3403(-M115)
- TEXACO ETL 7045E, ETL 8072B, N402
- TOTAL ATF H50235, FLUIDE AT 42
- ZF LIFEGUARD 5, # S671 090 170, LIFEGUARD 6, # S671 090 255

T-REX VI / DEXRON VI
SYNTHETIC

DESCRIPTION

T-REX VI is a fully synthetic automatic transmission fluid designed to meet the requirements of passenger cars and light trucks requiring GM Dexron VI or earlier generation fluids. This high-performance fluid is compatible with various Aisin Warner transmission models, including AW TF-80SC/SD, AWF21, AF40-6, AM6, AW6A-EI, TF81SC, AF21, and GA6F21WA (Mini). T-REX VI ensures superior performance, durability, and efficiency in automatic transmissions, providing excellent protection and smooth operation under diverse driving conditions.

MEETS OR EXCEED

- JWS 3309, JWS 3324, T-IV, AW-1, NWS 9638
- AS 68RC (T IV)
- AUDI/VW G-052-162-A1/A2
- BMW ETL-7045, 7045E, LA2634, ETL-8072B, 81 22 9 400 275
- CHRYSLER M1375.4
- FIAT (ALL VEHICLES) TYPO T-IV
- GENERAL MOTORS DEXRON II/III/IIIH/VI
- HONDA ACURA Z-1 PREMIUM, HONDAMATIC S
- HYUNDAI / KIA SP IV, HYUNDAI SPH-IV
- ISUZU BESCO ATF II, ATF III
- JAGUAR ATF 3403 M115, JLM 20238
- LT 71141
- MAZDA ATF M III
- MERCON LV
- MITSUBISHI DIAMOND SP-IV
- MB ZF 4 HP20, 236.1/5/6/7/8/9/236.41
- PEUGEOT ZF 4 HP20
- PORSCHE ATF 3403-M115
- SUBARU ATF, ATF HP
- TOYOTA TYPE T-III, T-IV
- TOYOTA WS
- VOLVO T-IV
- VOITH 55.6635 / VOLVO 97340
- ZF 5HP 18FL/19FL/24A
- ZF 5HP 30
- ZFF TE-ML 09
- BMW P/N 833227542290
- CITROEN P/N PR 9980
- SAAB P/N 93165147
- TOYOTA P/N 08886-02305/08886-81015

T-REX III / DEXRON III
SYNTHETIC

DESCRIPTION

T-REX III is a fully synthetic automatic transmission fluid engineered using premium, severely hydroprocessed base stocks and advanced additive technology. This formulation delivers exceptional oxidation and thermal stability, friction control, and load-carrying capacity. It also provides superior protection against corrosion and wear. T-REX III minimizes the formation of deposits, sludge, varnish, and foam, ensuring outstanding durability and reliable performance for a wide range of automatic transmission systems.

MEETS OR EXCEED

- ALLISON TES-389
- ALLISON C4
- MAN 339 TYPE V1/Z1/V2/Z2
- MB 236.1/236.10/236.5/ 236.6/236.9
- AISIN WARNER JWS 3309
- BMW 83 22 0 403 248
- BMW 83 22 2 163 514
- BMW 83 22 9 407 765 (LA 2634)
- BMW 83 22 9 407 807
- BMW 7045E (3 Series)
- BMW ETL-8072B (5 Series)
- BMW LT71141 (ZF 5 Speed)
- CHRYSLER ATF+3
- CHRYSLER ATF+4
- DAIHATSU ALUMIX ATF MULTI
- FORD M, FORD TASA
- FORD Mercon V
- FORD Mercon SP
- FORD Mercon LV
- FORD Mercon ATF Type F
- FORD XT-8-QMM5 [FRN5]
- GM Dexron II
- GM Dexron II D
- GM Dexron II E
- GM Dexron III F
- GM Dexron III G
- GM Dexron III H
- HONDA ATF-Z1 (not for CVT)
- HONDA ATF DW-1
- HYUNDAI ATF SP-II
- HYUNDAI ATF SP-III
- INFINITI Matic D
- INFINITI Matic J
- INFINITI Matic K
- IDEMITSU K17-JAGUAR X Type 2001-2005
- JATCO ATF 3100 PL085
- KIA ATF-SP-II
- KIA ATF-SP-III
- LEXUS ATF Type T
- LEXUS ATF Type T-II
- LEXUS ATF Type T-III
- LEXUS ATF Type T-IV
- LT 71141
- MAN 339 F
- MAN 339 V1
- MAN 339 V2
- MAN 339 Z1
- MAN 339 Z2
- MAZDA ATF M-III
- MAZDA ATF M-V
- MB 236.1
- MB 236.2
- MB 236.3
- MB 236.5
- MB 236.6
- MB 236.7
- MB 236.9
- MB 236.10
- MB 236.11
- MITSUBISHI DIAMOND SP-II
- MITSUBISHI DIAMOND SP-III
- MOPAR AS68RC
- NISSAN Matic D
- NISSAN Matic J
- NISSAN Matic K
- PORSCHE JWS 3309
- SUBARU ATF-5
- SUBARU ATF-HP
- SUZUKI 3314
- SUZUKI 3317
- SUZUKI 2384K
- SUZUKI ATF OIL
- SUZUKI ATF OIL SPECIAL
- TOYOTA ATF Type T
- TOYOTA ATF Type T-II
- TOYOTA ATF Type T-III
- TOYOTA ATF Type T-IV
- VOLVO 1161621, 97341
- VOLKSWAGEN G 052 025-A2
- VOLKSWAGEN G 052 162-A1
- VOLKSWAGEN G 052 990-A1
- VOLKSWAGEN G 052 990-A2
- VOLKSWAGEN G 055 025-A1
- VOLKSWAGEN G 055 025-A2
- VOITH 55.6335.XX (G607)
- VOITH 55.6336.3x
- VOLVO 97340
- VOLVO 97341
- ZF TE-ML 03D
- ZF TE-ML 04D
- ZF TE-ML 09C
- ZF TE-ML 11B
- ZF TE-ML 14A
- ZF TE-ML 14B
- ZF TE-ML 16L
- ZF TE-ML 17C

T-REX II / DEXRON IID
MINERAL

DESCRIPTION

T-REX II is a high-quality automatic transmission fluid formulated with highly refined base stocks and advanced additive technology. Designed for use in passenger cars and light commercial vehicles, it effectively reduces transmission "chatter," ensuring smooth and quiet operation across all speeds and conditions. T-REX II provides optimal oxidation and thermal stability, excellent friction control, superior cleanliness, high load-carrying capacity, and robust wear and corrosion protection. This fluid ensures extended transmission life and reliable performance under a wide range of operating conditions.

MEETS OR EXCEED

- GM DEXRON IID
- CHRYSLER +3
- VOITH H55.6335
- VOLVO 97355
- FORD ESP-M2C138-CJ / ESP-M2C166-H
- ALLISON TES 389, ALLISON TES 228(C4)
- MB 236.1/236.5/236.7
- ZF TE-ML-O4D / O9 / 11A / 14A
- BMW 81 22 9 400 272/81 22 9 400 275/81 22 9 407 738
- CAT TO-2
- TOYOTA TII/2
- MAN 339 TYPE L2/V1
- OPEL 19 40 700 / 19 40 707
- MITSUBISHI SP / SP2/ BTR

T-REX A / TYPE A
MINERAL

DESCRIPTION

T-REX A is a versatile multi-purpose transmission fluid specifically formulated for use in automatic gearboxes requiring GM Type A Suffix A specifications. Its advanced formula ensures exceptionally smooth operation of torque converters and fluid couplings in automatic transmissions. T-REX A provides reliable performance, enhancing the efficiency and longevity of the transmission system under various operating conditions.

MEETS OR EXCEED

- GM Type A Suffix A

T-REX LHM PLUS FLUID / FLOURSECENT GREEN
MINERAL

DESCRIPTION

T-REX LHM PLUS FLUID is a high-performance, multipurpose mineral-based fluid designed for brake, clutch, and hydraulic systems. It is specially formulated for use in Citroën models such as XM, XANTIA, BX, CX, SM, GS, and hydraulic power units in Citroën ID and DS vehicles manufactured after September 1966 (green-painted components). It is also compatible with brake circuits and hydraulic clutch control systems in Citroën utility vehicles like N, P, C35, and the PEUGEOT 405X4 vehicle level adjuster. This fluid offers excellent protection against pump wear and ensures efficient flow rates, even under extreme temperatures and pressures.

MEETS OR EXCEED

- PSA PEUGEOT CITROEN B71 2710
- ISO 7308
- FORD: ESN M6C 59A

T-REX TO-4 / API: GL-4
SYNTHETIC

DESCRIPTION

T-REX TO-4 is specially designed for power shift transmissions, final drives and wet brakes on heavy duty off-highway equipment in earthmoving, mining, logging, road transport and agricultural applications. It is blended from premium quality base oils and proven performance additives.

MEETS OR EXCEED

- Caterpillar TO-4
- Allison TES 439
- Komatsu KES 07.868.1
- Allison C-4
- ZF TE-ML-03C
- API GL-4

SAE GRADE
10W - 30 - 50 - 60

T-REX TIPTRONIC / 9G-TRONIC

SYNTHETIC



DESCRIPTION

T-REX TIPTRONIC is an advanced Automatic Transmission Fluid (ATF) engineered with cutting-edge synthetic base oils and high-quality performance additives. Designed for the latest generation of fuel-efficient 9-speed automatic transmissions, this high-performance fluid ensures optimal functionality and durability, making it an excellent choice for modern vehicles.

MEETS OR EXCEED

- MB 236.17

T-REX ATF+4 / CHRYSLER ATF+4®

SYNTHETIC



DESCRIPTION

T-REX ATF+4 is a premium automatic transmission fluid engineered to meet the requirements of most Japanese, Korean, and CHRYSLER vehicles needing ATF+4 or earlier specifications. This advanced fluid provides exceptional low-temperature performance and enhanced anti-shudder properties, ensuring smooth and reliable operation. T-REX ATF+4 is suitable for use in transmissions, hydraulic systems, and power steering units across American, European, Korean, Japanese, and other global manufacturers specifying CHRYSLER ATF+4, ATF+3, or ATF+2 fluids.

MEETS OR EXCEED

- CHRYSLER ATF+4® Requirements
- CHRYSLER MS-9602

T-REX CHF

SYNTHETIC



DESCRIPTION

T-REX CHF is a high-performance synthetic hydraulic fluid featuring ashless additives for superior efficiency. Specially formulated for modern vehicles, it is ideal for use in power steering, braking, suspension leveling, and hydraulic suspension systems. Additionally, it is suitable for shock absorbers, hydro-pneumatic suspension, and traction and stability control systems, making it a versatile and reliable multi-purpose solution.

MEETS OR EXCEED

- MAN M3289
- MB 345.0
- PENTOSIN CHF 11S
- CHRYSLER MS-11655
- VOLVO 1161529
- FIAT 9.55550-AG2/9.55550-AG3 VG 22
- BMW 81 22 9 407 758
- HYUNDAI/KIA PS[F-3/PSF-4
- FORD M2C204-A
- GM 89021185/ 89021186/ 1052884/ 993294
- VW/SEAT/SKODA/AUDI G 002 000 (TL 521 46), G 004 000

T-REX POWER STEERING FLUID

SYNTHETIC



DESCRIPTION

T-REX POWER STEERING FLUID is a high-performance, fully synthetic oil specifically formulated for power steering and suspension systems. It features a unique blend of anti-shudder additives, dispersants, and seal swell agents, combined with a specialized synthetic base oil. This advanced formulation ensures superior wear protection, extended service life, and reduced viscosity loss.

MEETS OR EXCEED

- FORD M2C134-C
- FORD M2C134-D
- HONDA PSF-II
- HONDA PSF-S
- HONDA PSF-V



**GEAR
OIL**

MAXSHIFT ULTRA / API: GL-5

FULLY SYNTHETIC / MINERAL



DESCRIPTION

MAXSHIFT ULTRA is a premium extreme pressure (EP) gear lubricant formulated with high-quality base stocks, advanced sulfur-phosphorus additives, friction modifiers, and corrosion inhibitors. It meets API GL-5 standards and a variety of manufacturer specifications. Designed for automotive applications, it delivers exceptional thermal stability and extreme pressure performance, ensuring reliable protection and optimal gear performance across a wide range of temperatures and demanding conditions.

MEETS OR EXCEED

- API GL-5
- MIL-L-2105D/2105E
- MAN 342 M1/342 M2
- ZF (07A) 12E/16B -16C/17B - 19B/21A

SAE GRADE

75W90 - 80W90 - 80W140 - 85W90 - 85W140 - 90 - 140

MAXSHIFT EXTRA / API: GL-4

FULLY SYNTHETIC / MINERAL



DESCRIPTION

MAXSHIFT EXTRA is a premium gear and transmission lubricant formulated with solvent-refined mineral base oils and advanced sulfur-phosphorus additive technology. These lubricants offer exceptional shear stability, delivering outstanding gear protection and reliable performance across a wide temperature range. Suitable for a variety of applications, they ensure durability and efficiency under demanding operating conditions.

MEETS OR EXCEED

- API GL-4
- MIL-L-2105B

SAE GRADE

75W90 - 80W90 - 80W140 - 85W90 - 85W140 - 90 - 140

MAXSHIFT / API: GL-1

MINERAL



DESCRIPTION

MAXSHIFT Gear Oils GL-1 are high-quality rust and oxidation-inhibited gear oils, ideal for automotive and industrial applications where straight mineral oil with SAE viscosity grades 90 or 140 is recommended. These oils are particularly suited for equipment containing copper or bronze components, as they avoid the use of sulfur-phosphorus additives that can cause damage. MAXSHIFT GL-1 oils ensure reliable lubrication and protection for a variety of machinery and equipment.

MEETS OR EXCEED

- API GL-1

SAE GRADE

90 - 140



BRAKE FLUID

PULSE 5.1 / DOT 5.1

FULLY SYNTHETIC



DESCRIPTION

PULSE 5.1 is a premium fully synthetic, polyglycol-based, non-silicone brake fluid designed to meet the rigorous demands of modern braking systems. It is suitable for all driving conditions and compatible with disc, drum, and anti-skid (ABS) applications. This DOT 5.1 brake fluid provides advanced performance and system protection, ensuring optimal braking efficiency. With excellent viscosity-temperature properties, it maintains superior functionality across a wide range of extreme high and low temperatures, delivering reliable performance under challenging conditions.

MEETS OR EXCEED

- FMVSS 116 DOT 5.1
- ISO 4925 (Class 5.1)

GRADE

DOT 5.1

PULSE 4 PLUS / DOT 4 PLUS

FULLY SYNTHETIC



DESCRIPTION

PULSE 4 PLUS is a high-performance DOT 4 PLUS synthetic brake fluid specifically engineered for use in heavy-duty brake systems. It is particularly suited for vehicles equipped with ABS, providing reliable and consistent braking performance. PULSE 4 PLUS is compatible with and can be mixed with all synthetic brake fluids of the same grade, ensuring seamless integration and optimal functionality across various brake systems.

MEETS OR EXCEED

- ISO 4925 Class 6
- FMVSS 116 DOT 4
- SAE J 1704
- MB 276.40

GRADE

DOT 4 PLUS

PULSE 4 LV / DOT 4

FULLY SYNTHETIC



DESCRIPTION

PULSE 4 LV is an advanced high-specification brake and clutch fluid designed to meet the stringent requirements of ISO 4925 Class 6. Its exceptional low-temperature viscosity ensures optimal fluid circulation through micro-valves, enhancing the responsiveness of ABS, ESP, and ASR high-pressure systems. With a higher wet boiling point compared to conventional DOT 4 fluids, PULSE 4 LV provides extended product life and superior performance in demanding driving conditions.

MEETS OR EXCEED

- ISO 4925 Class 6
- FMVSS 116 DOT 4
- SAE J 1704
- MB 331.0
- VW 501.14 (TL 766-Z)
- FORD WSS-M6C65-A2/M6C57-A2
- BMW QV 34001

GRADE

DOT 4

PULSE SUPER BLUE / DOT 4

FULLY SYNTHETIC



DESCRIPTION

PULSE SUPER BLUE is a premium brake fluid featuring a very high boiling point of 280°C, making it ideal for demanding braking applications. Its advanced formula provides exceptional water-binding properties, minimizing the drop in boiling point over time and ensuring long-lasting performance. Designed for durability, this fluid may not require replacement for up to 3 years under typical highway driving conditions. Its high dry and wet boiling points also make it an excellent choice for street-driven vehicles, where brake fluid is replaced less frequently than in race-oriented applications.

MEETS OR EXCEED

- ISO 4925 Class 6
- FMVSS 116 DOT 4
- SAE J 1704

GRADE

DOT 4

PULSE 4 / DOT 4

FULLY SYNTHETIC



DESCRIPTION

PULSE 4 is a high-performance brake fluid formulated with high molecular weight polyalkylene glycol ethers and borate esters to deliver exceptional DOT 4 quality. Its advanced formulation ensures a sustained high vapor lock point throughout the service life, outperforming conventional glycol ether-based fluids. PULSE 4 is engineered with corrosion inhibitors to protect metallic brake components and oxidation reducers to maintain stability under elevated temperatures, ensuring reliable braking performance and extended system life.

MEETS OR EXCEED

- FMVSS 116 DOT 3 and DOT 4
- SAE J 1703 and J 1704
- ISO 4925 (Classes 3 & 4)
- JIS K 2233

GRADE
DOT 4

PULSE 3 / DOT 3

FULLY SYNTHETIC



DESCRIPTION

PULSE 3 is a DOT 3 brake fluid formulated with polyglycol for use in hydraulic brake systems of commercial vehicles, passenger cars, and motorcycles operating under moderate conditions. It delivers effective lubrication and protection for braking systems, ensuring compatibility with seals and metals used in conventional systems. PULSE 3 provides reliable performance and system integrity for vehicles requiring DOT 3 type fluid.

MEETS OR EXCEED

- FMVSS 116 DOT 3
- ISO 4925 (Class 3)
- SAE J 1703

GRADE
DOT 3



COOLANT

GLACIER / OAT COOLANT



DESCRIPTION

GLACIER Coolant/Antifreeze is a high-performance, ready-to-use coolant formulated with ethylene glycol and free from phosphates, silicates, nitrites, and borates. It is designed to deliver outstanding protection against wet sleeve liner cavitation and corrosion for all cooling system metals. Utilizing organic corrosion inhibitors, GLACIER Coolant/Antifreeze ensures comprehensive cooling system protection, making it ideal for both on-road and off-road applications.

MEETS OR EXCEED

- BS 6580
- ASTM D3306
- SAE J1034, J1038
- CUMMINS 90T8-4
- CAT ELC (EC-1)
- Detroit Diesel 7SE298
- GM 1825, 1899M, 6277M
- TMC RP329
- Freightliner 48-22880

CONCENTRATION

33% - 50% - 60% - 100%

GLACIER G400 / SOAT SILICATED ORGANIC ACID TECHNOLOGY



DESCRIPTION

GLACIER G400 is a premium Ethylene Glycol-based coolant concentrate offering anti-freeze and anti-boil properties. Formulated with advanced Si-OAT (Silicate-Organic Acid Technology) inhibitors, it is free from Phosphates, Amines, Borates, and Nitrites. The long-life formulation ensures superior protection against rust, corrosion, cavitation, and cooling system degradation. GLACIER G400 meets the stringent VW TL 774-G (G12++) specification and provides an extended service life of up to 8 years or 500,000 kilometres.

MEETS OR EXCEED

- AUDI TL 774-G
- BENTLEY TL 774-G
- BUGATTI TL 774-G
- GM 6277M
- CUMMINS CES 14603
- DEUTZ DQC CC-14
- DUCATI (TL 774-G)
- Lamborghini TL 774-G
- MAN 324 Typ Si-OAT
- MB 325.6, MB 326.6 (Ready Mix)
- MB 325.5, MB 326.5 (Ready Mix)
- MTU MTL 5048
- Porsche TL 774-G
- Seat TL 774-G
- Skoda TL 774-G
- VW TL 774-G
- FORD WSS-M97B44-D

CONCENTRATION

100%

GLACIER G130 / LOW SILICATE HYBRID (LOBRID)



DESCRIPTION

GLACIER G130 is a high-performance coolant additive concentrate formulated with mono ethylene glycol and glycerol. Utilizing a hybrid technology inhibitor system, it combines silicates with proven Organic Acid Technology (OAT) for enhanced protection. Free from nitrites, amines, and phosphates, GLACIER G130 provides exceptional defense against frost, corrosion, and overheating, ensuring optimal engine performance throughout its service life. Designed for modern passenger cars and commercial vehicles, it meets the stringent VW TL 774-J (G13) coolant specification.

MEETS OR EXCEED

- Volkswagen TL-774 J (G13)

CONCENTRATION

100%

GLACIER G300 / ORGANIC ACID TECHNOLOGY



DESCRIPTION

GLACIER G300 is a premium long-life antifreeze coolant concentrate formulated with mono ethylene glycol for heavy-duty applications, passenger cars, and stationary combustion engines. Free from nitrites, amines, silicates, and phosphates, it utilizes highly efficient Organic Acid Technology (OAT) for superior performance. GLACIER G300 protects high-performance engines from frost, overheating, corrosion, and cavitation. It ensures comprehensive protection for the entire cooling system, with a particular focus on preventing corrosion on all common metals, including aluminium. Meeting the requirements of VW TL 774-D/F (G12, G12+), it offers a service life of up to 7 years or 450,000 km.

MEETS OR EXCEED

- AUDI TL 774-D/F
- BENTLEY TL 774-D/F
- DAF MAT 74002
- DEUTZ DQC CB-14
- Ferrari (> 2010)
- Lamborghini TL 774-D/F
- MAN 324 SNF
- MB 325.3
- MB 326.3 (Ready Mix)
- Mini LC-07
- MTU MTL 5048
- Porsche TL 774-D/F
- Seat TL 774-D/
- MB 326.3 (Ready Mix)
- Skoda TL 774-D/F
- GM 6277M
- PSA B71 5110
- TOYOTA TSK 2601G-8A
- FORD WSS-M97B44-D
- Volkswagen VWTL 774-D/F

CONCENTRATION

100%

GLACIER G480 / SILICATE TYPE HYBRID TECHNOLOGY



DESCRIPTION

GLACIER G480 is a high-performance antifreeze coolant concentrate formulated with mono ethylene glycol. Free from nitrites, amines, and phosphates, it combines inorganic and organic corrosion inhibitors, categorizing it as a hybrid coolant. GLACIER G480 provides robust protection for modern passenger car and commercial vehicle engines against cavitation, freezing, rust, and overheating. Its advanced corrosion inhibitors safeguard all cooling system metals from deposits and corrosion. Complying with VW coolant specification VW TL 774-C (G11), it ensures a service life of up to 7 years or 450,000 km.

MEETS OR EXCEED

- AUDI TL 774-C
- BMW GS 94000
- DEUTZ TR-0199-99-1115
- DEUTZ DQC CA-14
- MAN 324 NF
- MB 325.0 • MB 325.2
- MB-326.0 (Ready Mix)
- MTU MTL 5048
- Opel B 040 0240
- Seat TL 774-C
- Skoda TL 774-C
- VW TL 774-C
- VOLVO Trucks TR 1286083
- Voith Turbo 172.00225010

CONCENTRATION

100%

GLACIER HOAT / PREDILUTED COOLANT/ANTIFREEZE



DESCRIPTION

GLACIER HOAT is a ready-to-use antifreeze coolant leveraging Hybrid Organic Acid Technology (HOAT) to deliver superior protection against rust and corrosion in automotive and truck cooling systems. Suitable for a wide range of vehicles, including American, Asian, and European models, this formulation is phosphate-free and excludes 2-Ethylhexanoic acid (2EH), ensuring compatibility and optimal performance across diverse engine types.

MEETS OR EXCEED

- ASTM D3306, D4985, D6210
- BS 6580
- SAE J1034, J1941
- FORD WSS-M97B51-A1
- ANFOR NF R 15-601
- CATERPILLAR (DEAC)
- CHRYSLER MS 7170
- CUMMINS
- DETROIT DIESEL
- JIS K 2234
- JOHN DEERE H-5, H24B1, H24C1
- TMC RP329, RP330

CONCENTRATION

50%

GLACIER A2 GREEN / ANTIFREEZE CONCENTRATE FOR ASIAN VEHICLES



DESCRIPTION

GLACIER A2 GREEN is an advanced antifreeze coolant formulated with Phosphate Organic Acid Technology (Phosphate OAT), classified as Hybrid Organic Acid Technology (HOAT) in the US market. Designed specifically for Asian vehicles requiring "green" antifreeze/coolant, it is free from silicates, borates, nitrites, and amines, ensuring compatibility and optimal protection for these engines. To maintain performance and prevent issues like gel formation or radiator clogs, it is important not to mix GLACIER A2 GREEN with other coolant types, particularly silicate-based formulations.

MEETS OR EXCEED

- ASTM D3306

CONCENTRATION

33% - 50% - 60% - 100%

GLACIER DEXCOOL 50 / EXTENDED LIFE COOLANT



DESCRIPTION

GLACIER DEXCOOL 50 is a single-phase, ethylene glycol-based extended-life coolant formulated for automotive engines. It is designed to deliver superior protection and performance while meeting GM 6277M, the General Motors specification for extended-life coolant. This ensures compatibility and reliability for vehicles requiring this standard.

MEETS OR EXCEED

- GM 6277M/1825M/1899M
- US FED A-A-870-A
- CHRYSLER MS 9769
- FORD WSS-M97B44-D2
- VAG G-12
- ASTM D4656

CONCENTRATION

50%

GLACIER FL22 / EXTENDED LIFE COOLANT



DESCRIPTION

GLACIER FL22 is a ready-to-use, prediluted ethylene glycol-based coolant that incorporates a time-tested formula without amines and silicates. Designed as an extended-life radiator antifreeze, it provides reliable protection and long-lasting performance for modern engine cooling systems.

MEETS OR EXCEED

- GM 08CLAG010SO HONDA E Coolant
- FORD VC-10-A2
- Hyundai 00232-19010
- Hyundai 07100-00200
- Hyundai 07100-00400
- Hyundai Long Life Coolant
- MAZDA 000077508E20
- MAZDA C100CL005A4X
- MAZDA C122CL005A4X
- MAZDA FL22 Coolant
- Nissan Anti-freeze Coolant (L250)
- Nissan KE90299934
- Nissan KE90299944
- SUBARU Coolant 16218
- SUZUKI Long life Coolant
- WSS-M97B55

CONCENTRATION

100%

GLACIER G650 / PSI-OAT COOLANT



DESCRIPTION

GLACIER G650 is a high-quality, premixed, ready-to-use coolant that utilizes advanced organic acid technology combined with silicate and phosphate. It is specifically designed to meet the demands of modern Volkswagen Group engines, providing exceptional corrosion protection and long-lasting performance under extreme thermal conditions. As the updated version of G13 coolant, GLACIER G650 is backward compatible and safely mixed with all previous VW coolants, including G11, G12, G12+, and G13.

MEETS OR EXCEED

- BENTLEY (TL 774-L)
- AUDI (TL 774-L)
- BUGATTI (TL 774-L)
- DEUTZ (DQC CC-14)
- Lamborghini (TL 774-L)
- Porsche (TL 774-L)
- Seat (TL 774-L)
- Skoda (TL 774-L)
- Volkswagen (VW) (TL774-L)
- AS 2108-2004
- ASTM D 3306
- ASTM D 4985
- BS6580:2010
- CUNA NC 956-16
- PN-C40007:2000
- SAE J1034
- ÖNORM V5123
- SANS 1251:2005
- China GB 29743-2013

CONCENTRATION

100%

GLACIER HDD 100 / ULTRA HIGH-PERFORMANCE COOLANT WITH LOW SILICATE TECHNOLOGY



DESCRIPTION

GLACIER HDD 100 is a long-life coolant concentrate formulated with mono ethylene glycol, designed for heavy-duty diesel engines and stationary engines. Free of amines and phosphates, it incorporates low-silicate technology to provide reliable protection against frost, overheating, corrosion, and cavitation in highly loaded engines. This advanced formulation ensures comprehensive protection for all metals within the cooling system, delivering optimal performance and durability.

MEETS OR EXCEED

- MTU MTL 504
- CASE MS 1710
- CAT EC-1
- CUMMINS CES 14603
- DETROIT DIESEL 93K217 (NOAT)
- FREIGHTLINER 48-2288D
- IVECO 18-1830
- KENWORTH RO26-170-97
- MAN 324 TYPE N
- NEW HOLLAND WSN-M97B18-D
- PACCAR CS 0185
- TOYOTA Motor Corp. RP 329
- CHRYSLER MS 7170/MS 9769
- DETROIT DIESEL 7SE298
- FORD ESE-M97B44-A
- FORD ESE-M97B18-C
- FORD WSS M97B51-A1
- GM 1825M & GM 1899M
- JIS K2234
- MACK 014GS17004

CONCENTRATION

100%

GLACIER LTC-18 / ULTRA HIGH-PERFORMANCE COOLANT WITH LOW SILICATE TECHNOLOGY



DESCRIPTION

GLACIER LTC-18 is a premium engine coolant concentrate designed to meet the latest requirements of high-performance engines, offering extended service life of up to 5 years or 250,000 km. This Si-OAT (Silicated Organic Acid Technology) formulation uses advanced organic acid technology combined with an ethylene glycol base to deliver outstanding protection for all cooling system components and metals, including aluminium. GLACIER LTC-18 is free of phosphates, nitrites, amines, and borates, ensuring optimal performance and compatibility.

MEETS OR EXCEED

- BMW LC-18
- CUMMINS CES 14603
- CES 14439
- CUNA NC 956-16
- DEUTZ DQC CC-14
- GB 29743-2013
- JIS K 2234:2006
- ONORM V 5123
- PN-C40007:2000
- SANS 1251:2005
- ASTM D3306
- ASTM D4985
- ASTM D6210
- AS 2108-2004
- BS 6580:2010

CONCENTRATION

33% - 50% - 60% - 100%

GLACIER P-OAT / HYBRID TECHNOLOGY



DESCRIPTION

GLACIER P-OAT is a Phosphate Organic Acid Technology (Phosphate OAT) coolant, also referred to as HOAT (Hybrid Organic Acid Technology) in the U.S. market. It is specially formulated for all Asian vehicles that require "blue" antifreeze/coolant. GLACIER P-OAT is free from silicate, borate, nitrite, and amine additives, ensuring compatibility with Asian cooling system requirements. Mixing with other coolants, especially silicate-based ones, is not recommended as it may lead to gel formation and radiator clogging.

MEETS OR EXCEED

- ASTM D3306

CONCENTRATION

50%

GLACIER TYPE D / READY TO USE COOLANT



DESCRIPTION

GLACIER TYPE D is a new-generation, ready-to-use, ethylene glycol-based antifreeze/coolant. It is entirely free from silicates, nitrites, amines, phosphates, and boron, ensuring optimal performance and compatibility with modern cooling systems.

MEETS OR EXCEED

- RENAULT/ RVI Type D
- AFNOR NF R 15-601
- BS 6580/5117
- ASTM D 3306
- SAE J 1034

CONCENTRATION

50%



INDUSTRIAL

GRIT EP

MINERAL



DESCRIPTION

GRIT EP gear lubricants are premium-quality, multipurpose mineral oil-based lubricants specifically designed for a variety of industrial gear applications. They are formulated to provide excellent performance under high-load and shock-loading conditions, ensuring reliable protection and efficient operation in demanding environments.

MEETS OR EXCEED

- DIN 51517 Part 3 CLP
- ISO 12925-1:1996 CKD
- AIST 224/US STEEL 224
- DAVID BROWN S1.53.101
- GM LS 2 EP GEAR OIL
- FIVES CINCINNATI MACHINE GEAR
- FLENDER
- ANSI/AGMA 9004-D95/9005-E02

ISO VG GRADE

68 - 100 - 150 - 220 - 320 - 460 - 680 - 1000

GRIT HD

SYNTHETIC



DESCRIPTION

GRIT HD gear oils are premium synthetic PAO-based lubricants engineered to deliver exceptional protection for industrial gear systems. They feature an advanced additive package that provides excellent resistance to scuffing and superior protection against micro-pitting fatigue. GRIT HD oils are suitable for a broad range of applications, including reduction gearboxes, direct drives, angle drives, chain drives, gear couplings, hoist/winch gearboxes, screw feeder gearboxes, TL gearboxes, swing gearboxes, turret heads, work heads, and centralized circulation systems. These oils ensure reliable performance and extended equipment life across diverse industrial operations.

MEETS OR EXCEED

- US STEEL 224
- AGMA 250.04
- DAVID BROWN TABLE E 2E-9E

ISO VG GRADE

68 - 100 - 150 - 220 - 320 - 460 - 680 - 1000

TORQON AW

SYNTHETIC/MINERAL



DESCRIPTION

TORQON AW hydraulic fluids are premium-quality lubricants formulated with highly refined mineral oils and an advanced additive package. They offer excellent oxidation resistance, ensuring reliable performance at elevated temperatures and extended operating intervals. With high load-carrying capacity, TORQON AW fluids provide robust protection against corrosion, foaming, and sludge formation. Their superior anti-wear properties safeguard internal components, minimize wear, and help reduce equipment downtime.

MEETS OR EXCEED

- DIN 51524-2 HLP
- ASTM D6158-05 HM
- Eaton (Vickers) M-2950 S, I-286 S
- ISO 11158 HM
- Cincinnati P-68 (ISO 32)
- Cincinnati P-70 (ISO 46)
- Cincinnati P-69 (ISO 68)
- Denison HF-O, HF-1, HF-2
- AFNOR NF-E 48-603

ISO VG GRADE

15 - 22 - 32 - 37 - 46 - 68 - 100

TORQON 10W

SYNTHETIC/MINERAL



DESCRIPTION

TORQON 10W is a premium heavy-duty hydraulic oil designed for both on and off-highway applications requiring an SAE 10W grade oil. Formulated with advanced base oils and a balanced additive system, it meets the demanding requirements of heavy-duty hydraulic equipment. TORQON 10W delivers exceptional anti-wear protection, oxidation and corrosion resistance, and effective suppression of foam and aeration, ensuring reliable performance and extended equipment life.

MEETS OR EXCEED

- Vickers 35VQ25
- Caterpillar TO-2

SAE GRADE

10W

TORQON R&O

MINERAL



DESCRIPTION

TORQON R&O is a premium rust and oxidation (R&O) inhibited circulating oil designed for use in a wide range of industrial applications. It is suitable for circulation systems, centrifugal air compressors, geared turbines, lightly loaded enclosed gear drives, and other equipment requiring effective protection against rust and oxidation.

MEETS OR EXCEED

- DIN 51517-2 (HL)
- DIN 51524-1
- BS 489
- ASTM D4304 TYPE 1
- GEK 101941A, GEK 46506E
- GEK 27070, GEK 28143A
- MIL-L-17672D
- US STEEL 126

ISO VG GRADE

32 - 46 - 68 - 100 - 150 - 220

TORQON EAL

SYNTHETIC



DESCRIPTION

To minimize environmental impact and protect the environment from accidental oil spills, we have developed the TORQON EAL range of biodegradable hydraulic oils. These advanced lubricants are formulated with synthetic oleochemical esters and are readily biodegradable, meeting stringent biodegradability and toxicity standards. They provide an eco-friendly solution while delivering high performance in hydraulic systems.

MEETS OR EXCEED

- PW1 Ultimate Biodegradability (ASTM D5864)
- OECD 301B Readily Biodegradable
- Vessel General Permit (VGM) Compliant
- EN 16807: European Standard

ISO VG GRADE

46 - 68 - 100

TORQON HVLP

SYNTHETIC/MINERAL



DESCRIPTION

TORQON HVLP is a high-performance, high viscosity index anti-wear hydraulic oil designed for optimal operation across a wide temperature range. Its advanced formulation ensures superior wear protection for hydraulic pumps and motors, excellent oxidation resistance, and thermal stability at elevated temperatures, minimizing deposit formation and extending service life. Additionally, TORQON HVLP effectively protects hydraulic system components against rust and corrosion, making it ideal for demanding hydraulic applications.

MEETS OR EXCEED

- DIN 51517-2 (HL)
- DIN 51524-1
- BS 489
- ASTM D4304 TYPE 1
- GEK 101941A, GEK 46506E
- GEK 27070, GEK 28143A
- MIL-L-17672D
- US STEEL 126

ISO VG GRADE

15 - 22 - 32 - 46 - 68 - 100

TORQON SYN HVLP

SYNTHETIC



DESCRIPTION

TORQON SYN HVLP is a premium synthetic hydraulic oil engineered for exceptional performance across a broad temperature range. Its advanced formulation offers outstanding high-temperature stability, shear stability, and oxidation resistance, ensuring long-lasting performance. With a high viscosity index and low pour point, it is suitable for use in extreme conditions. TORQON SYN HVLP delivers excellent wear protection, thermal stability, and rust and corrosion resistance, effectively safeguarding hydraulic system components. Designed for extended drain intervals, it provides up to three times the equipment protection compared to conventional hydraulic oils.

MEETS OR EXCEED

- DIN 51524 Part 3, Type HVLP
- Denison HF-O, HF-1, HF-2

ISO VG GRADE

32 - 46 - 68 - 100

TORQON MULTI HF

SYNTHETIC



DESCRIPTION

TORQON MULTI HF is a high-performance synthetic-based multifunctional hydraulic fluid specifically designed for modern vehicles equipped with advanced hydraulic systems. This includes power steering, hydraulic dampers, suspensions, hard tops, and centralized hydraulic systems. Its superior formulation ensures optimal performance, excellent system protection, and smooth operation across a wide range of conditions.

MEETS OR EXCEED

- ISO 7308
- ZF TE-ML O2K
- JEEP MS 11655
- DODGE MS 11655
- FENDT X 902 011 622
- FORD WSS-M2C204-A
- MAN M 3289 (3623/93)
- DIN 51 524 T2, 51 524 T3
- KIA 00232-19017, PSF-4
- SAAB 3032 380, 93160548
- BENTLEY RH 5000, TH 5000
- FIAT 9.55550-SA1, Tutela GI/R
- HYUNDAI 00232-19017, PSF-4
- LEXUS PSA S71 2710, PSF NEW-W
- TOYOTA PSA S71 2710, PSF NEW-W
- VOLVO 1161529, 1273 36, 30741424
- AUDI G 002 000, G 00 4000, TL 52 146
- FUCHS TITAN ZH 3044, TITAN ZH 4300 B
- PORSCHE 000 043 203 33, 000 043 206 56
- SEAT G 002 000, G 004 000, G 004 012, TL 52 146
- SKODA G 002 000, G 004 000, G 004 012, TL 52 146
- LAND ROVER GRIT Cold Climate PAS Fluid LRN2261, LR003401
- OPEL B 040 0070, B 040 2012, GM 1940 715, GM 1940 766
- VW G 002 000, G 004 000, G 004 012, TL 52 146, TL 52 146
- CHRYSLER 05127381AB, 68088485AA, MS 10838, MS 11655, MS 5931
- MERCEDES-BENZ 001 989 24 03 10, 001 989 24 03 12, MB 345.0, Q 1 32 0001
- DS (CAPSA) 9730 A5, 99 7969, 9979 A4, H 50126, Total Fluid DA, Total Fluid LDS
- GENERAL MOTORS B 040 0070, B 040 0070, B 040 2012, GM 1940715, GM 1940766
- PEUGEOT 9730 A5, 9735-EJ, 99 7969, 9979 A4, H 50126, PSA S71 2710, Total Fluid DA, Total Fluid LDS
- CITROËN 9730 A5, 9735-EJ, 9735-EJ, 99 7969, 9979-A1, 9979 A4, H 50126, PSA S71 2710, Total Fluid DA, Total Fluid LDS
- MINI 54 34 0 392 235, 54 34 0 394 395, 54 34 7 117 733, 81 22 9 407 758, 82 11 0 148 132, 82 11 1 468 041, 83 29 0 429 576
- BMW 54 34 0 392 235, 54 34 0 394 395, 54 34 7 117 733, 81 22 9 407 758, 82 11 0 148 132, 82 11 1 468 041, 83 29 0 429 576



GREASE

GRIPTOR L-EP

LITHIUM



DESCRIPTION

GRIPTOR L-EP is a versatile extreme pressure grease formulated with a lithium 12-hydroxystearate soap thickener and premium mineral base oils. Enhanced with antioxidants, rust and corrosion inhibitors, as well as extreme pressure and anti-wear additives, this grease provides excellent mechanical stability, load-carrying capacity, and superior protection against wear and corrosion.

ADVANTAGES

- The operating temperature range is from -25°C to 130 °C.
- Excellent mechanical stability
- Easy to pump at low temperatures
- Excellent resistance against water
- Very good anti-wear protection
- Very good rust and corrosion protection

NLGI GRADE

000 - 00 - 0 - 1 - 2 - 3

GRIPTOR LC-EP

LITHIUM



DESCRIPTION

GRIPTOR LC-EP is a high-performance extreme pressure grease specifically designed to resist water washout and protect lubricated components against wear and corrosion. Ideal for plain and rolling bearings operating under heavy loads in wet environments, this grease provides outstanding mechanical stability, load-carrying capacity, and corrosion protection. Fortified with calcium 12-hydroxystearate thickener, GRIPTOR LC-EP delivers enhanced water resistance and mechanical stability, making it a versatile multipurpose grease for demanding applications.

ADVANTAGES

- The operating temperature range is from -20°C to 130°C
- Very good rust and corrosion protection
- High-load carrying capacity
- Excellent resistance against water
- Very good anti-wear protection
- Good shear and stress stability
- Very good adhesion properties

NLGI GRADE

000 - 00 - 0 - 1 - 2 - 3

GRIPTOR L-MP

LITHIUM 12-HYDROXYSTEARATE



DESCRIPTION

GRIPTOR L-MP is a versatile, general-purpose lubricating grease formulated with a lithium hydroxystearate soap thickener and premium-quality mineral base oil. It is enhanced with antioxidants, rust and corrosion inhibitors, and anti-wear additives, ensuring reliable performance. This grease is ideal for lubricating rolling element bearings, electric motor bearings, water pumps, and sealed-for-life bearings. GRIPTOR L-MP grades, including NLGI 1 and NLGI 2, are specifically designed for general industrial applications and can be used in centralized lubrication systems operating under normal temperature conditions.

ADVANTAGES

- The operating temperature range is -20°C to 130°C
- Good oxidation and mechanical stability
- Reliable high-temperature performance
- Long storage life
- Good rust and corrosion protection

NLGI GRADE

000 - 00 - 0 - 1 - 2 - 3

GRIPTOR LC-MP

LITHIUM



DESCRIPTION

GRIPTOR LC-MP is a versatile, general-purpose lubricating grease formulated with a lithium hydroxystearate soap thickener and premium-quality mineral base oil. Enhanced with antioxidants, rust and corrosion inhibitors, and anti-wear additives, it ensures reliable performance in a variety of applications. Recommended for rolling element bearings, electric motor bearings, water pumps, and sealed-for-life bearings, GRIPTOR LC-MP is available in NLGI 1 and NLGI 2 grades for general industrial use. These grades are suitable for centralized lubrication systems operating at normal temperatures. Additionally, the grease is fortified with Ca-12 Hydroxystearate thickener, providing superior water resistance and mechanical stability.

ADVANTAGES

- The operating temperature range is -20°C to 120°C
- Good oxidation and mechanical stability
- Reliable high-temperature performance
- Long storage life
- Good rust and corrosion protection

NLGI GRADE

1 - 2 - 3

GRIPTOR HT

CALCIUM



DESCRIPTION

GRIPTOR HT is a high-performance grease formulated with calcium 12-hydroxystearate soap and premium-quality base oil. Its unique soap structure and carefully selected additives enable reliable performance at operating temperatures up to 110°C. GRIPTOR HT offers exceptional water resistance, excellent lubricity, superior wear protection, and robust corrosion resistance, making it ideal for demanding applications in challenging environments.

ADVANTAGES

- The operating temperature range is -20°C to 110°C
- Excellent water resistance
- High mechanical stability
- Good Lubricity
- Good shear and stress stability
- Good pumpability

NLGI GRADE

1 - 2 - 3

GRIPTOR LT

CALCIUM SOAP



DESCRIPTION

GRIPTOR LT is a high-quality lubricating grease formulated with a calcium-soap thickener, available in NLGI 2 and NLGI 3 consistencies. It delivers excellent water resistance and provides reliable protection against corrosion, making it suitable for a wide range of applications in wet and humid environments.

ADVANTAGES

- The operating temperature range is from -10°C to 60°C
- Very good lubricity
- Very good rust and corrosion protection
- Lower cost
- Excellent water washout properties

NLGI GRADE

1 - 2 - 3

GRIPTO-TECH LC 40-EP-SEMI SYN

LITHIUM CALCIUM



DESCRIPTION

GRIPTO-TECH LC 40-EP-SEMI SYN is a semi-synthetic fluid grease designed for use in centralized lubrication systems in trucks and buses. It is formulated with a blend of highly refined mineral and selected synthetic base oils, enhanced with extreme pressure and specialized additives. This combination ensures exceptional protection and performance under a wide range of operating conditions.

ADVANTAGES

- The operating temperature range is -20°C to 140°C
- Effective extreme pressure properties
- Enhanced load-carrying and wear protection properties
- Good pumpability
- Good water washout properties

NLGI GRADE

00/000

GRIPTO-TECH L 220-EP

LITHIUM SOAP



DESCRIPTION

GRIPTO-TECH L 220-EP is a versatile, extreme-pressure grease formulated with a lithium 12-hydroxystearate soap thickener and high-quality mineral base oil. Enriched with extreme pressure and proven performance-enhancing additives, this grease is engineered for a wide variety of applications. It is particularly suited for use in steel mills, heavy-duty plain and rolling element bearings operating under severe conditions, including shock loading and wet environments. Additionally, it is ideal for gearbox applications requiring semi-fluid grease and centralized chassis lubrication systems.

ADVANTAGES

- The operating temperature range is -20°C to 130°C
- Excellent anti-wear and extreme pressure properties
- Excellent mechanical stability
- Good resistance to water-washout
- Excellent oxidation stability

NLGI GRADE

00 - 0 - 1

GRIPTO-TECH L 100-EP-SYN

LITHIUM



DESCRIPTION

GRIPTO-TECH L 100-EP-SYN is a high-performance grease formulated with synthetic base oil (PAO) and lithium soap thickener. Its advanced thickener technology and low-viscosity oil deliver exceptional lubrication performance at extremely low temperatures, down to -50°C, and support operations at extremely high speeds. This grease is designed to provide reliable protection and optimal performance across a wide range of demanding applications.

ADVANTAGES

- The operating temperature range is from -50°C to 110°C
- Low friction torque
- Quiet running
- Good oxidation stability
- Good water resistance

NLGI GRADE

2 - 3

GRIPTO-TECH L 100-M3

LITHIUM 12-HYDROXYSTEARATE



DESCRIPTION

GRIPTO-TECH L 100-M3 is a high-performance grease formulated with lithium 12-Hydroxystearate soap thickener and premium mineral base oil. It is enhanced with antioxidants, rust and corrosion inhibitors, extreme pressure, and anti-wear additives. Additionally, the inclusion of 3% molybdenum disulfide provides superior protection against wear and shock loads, making it ideal for applications subjected to heavy-duty and demanding operating conditions.

ADVANTAGES

- The operating temperature range is from -20°C to 120°C
- The presence of moly provides additional protection against wear
- Excellent load-carrying capacity
- Good resistance against water
- Good mechanical stability
- Good corrosion protection

NLGI GRADE

2 - 3

GRIPTO-TECH LX 460-EP-SYN

LITHIUM COMPLEX



DESCRIPTION

GRIPTO-TECH LX 460-EP-Syn is a high-performance synthetic grease formulated with an advanced Lithium Complex thickener, PAO synthetic base oil, and enhanced with polymers, anti-wear agents, tackiness additives, and rust and oxidation inhibitors. This multi-purpose, semi-fluid grease is engineered to deliver exceptional performance across various applications, especially in extreme low-temperature environments. Its robust formulation ensures superior protection under high-pressure and demanding operating conditions.

ADVANTAGES

- The operating temperature range is from -30°C to 150°C
- Truck and trailer wheel end bearings where NLGI 00 greases are specified
- Recommended for industrial plain and anti-friction bearings operating at high speed
- Good oxidation stability
- Where ultra-low temperatures limit the mobility and pumpability of heavier grades of grease

NLGI GRADE

00

GRIPTO-TECH LX 220-EP

LITHIUM COMPLEX



DESCRIPTION

GRIPTO-TECH LX 220-EP grease is a high-performance lubricant formulated with high viscosity index mineral oils and advanced additives to enhance extreme pressure, anti-wear, anti-corrosion, and anti-oxidation properties. It is specifically designed for bearings operating under heavy loads and high temperatures. This grease is also ideal for applications such as continuous casting, quarries, breakers, roller conveyors, and automotive wheel bearings, providing reliable performance in demanding conditions.

ADVANTAGES

- The operating temperature range is from -25°C to 140°C
- Excellent mechanical stability under vibrating conditions
- Excellent extreme pressure properties
- Excellent wear resistance
- High dropping point
- Good corrosion protection

NLGI GRADE

1 - 2 - 3

GRIPTO-TECH LC 150-EP-M5-SYN

LITHIUM CALCIUM



DESCRIPTION

GRIPTO-TECH LC 150-EP-M5-SYN is a high-performance synthetic grease containing 5% molybdenum disulfide (MoS₂). It is an extreme-pressure, multi-purpose lubricant specifically designed for mining and construction equipment, providing superior protection during heavy-duty operations. This advanced synthetic grease ensures excellent mobility, even in arctic winter conditions, and is engineered for balanced all-around performance. Its formulation delivers outstanding load-carrying capability, enhanced durability, and an extended effective service life.

ADVANTAGES

- The operating temperature range is from -40 to 130
- Outstanding high-temperature oxidation stability
- Excellent extreme pressure properties
- High dropping point
- Effective corrosion protection
- Long operational life

NLGI GRADE

0/00 - 1

GRIPTO-TECH LC 220-EP

LITHIUM CALCIUM



DESCRIPTION

GRIPTO-TECH LC 220-EP is an extreme-pressure grease fortified with a solid lubricant for enhanced performance. It exhibits exceptional resistance to water washout and provides superior protection against wear and corrosion for lubricated components. This grease is ideal for shock-loaded, heavy-duty bearings operating in wet conditions and is also well-suited for off-road applications and fifth-wheel lubrication.

ADVANTAGES

- The operating temperature range is from -25°C to 130°C
- Effective extreme pressure properties
- Enhanced load-carrying and wear protection properties
- Good pumpability
- Good water washout properties

NLGI GRADE

2

GRIPTO-TECH LX 460-EP

LITHIUM COMPLEX



DESCRIPTION

GRIPTO-TECH LX 460-EP is a mineral oil-based grease designed for extreme pressure performance. It is suitable for general industrial and automotive applications where loads or temperatures exceed the capabilities of general-purpose greases. This grease is particularly ideal for lubricating heavy-duty, slow-moving bearings used in demanding industries such as steel, cement, paper, chemical manufacturing, and mining.

ADVANTAGES

- The operating temperature range is -20°C to 150°C
- High base oil viscosity for slow moving large bearings
- Excellent mechanical stability
- Excellent extreme pressure properties
- Excellent water resistance and effective corrosion properties
- High dropping point

NLGI GRADE

00/000

GRIPTO-TECH LX 150-EP

LITHIUM COMPLEX



DESCRIPTION

GRIPTO-TECH LX 150-EP is a multi-purpose lithium complex grease designed for high-temperature and long-term performance in industrial and automotive applications. It offers excellent fretting corrosion protection, water tolerance, resistance to water washout, and reliable corrosion protection. This grease is fortified with extreme pressure (EP) additives, rust inhibitors, and antioxidants, providing outstanding mechanical stability and load-carrying capabilities for demanding operating conditions.

ADVANTAGES

- Good high-temperature stability
- Extreme pressure capability
- Resistance to water washout
- Excellent rust and corrosion protection
- Long service life

NLGI GRADE

1 - 2 - 3

GRIPTO-TECH ND 460

BENTONE CLAY



DESCRIPTION

GRIPTO-TECH ND 460 is a high-performance grease formulated with Bentone clay, highly refined heavy base oil, and fortified with antioxidant and anti-rust additives. This grease is water-resistant, making it ideal for applications requiring durable protection in wet or challenging conditions.

ADVANTAGES

- The operating temperature range is -20°C to 160°C
- Non-melting thickener keeps consistency at high temperature
- Good water resistance properties
- Good oxidation and thermal stability
- Suitable for heavy and shock loading capabilities
- Good corrosion and rust protection

NLGI GRADE

2

GRIPTO-TECH P&B

LITHIUM SOAP



DESCRIPTION

GRIPTO-TECH P&B grease is a versatile, multi-purpose lithium-based grease enhanced with fine-grade graphite. The graphite particles fill surface imperfections, evenly distribute loads, and help prevent wear and tear. This grease is suitable for a wide range of applications, including industrial machinery, agricultural equipment, and earth-moving machinery, providing reliable lubrication and protection under demanding conditions.

ADVANTAGES

- The operating temperature range is -20°C to 130°C
- High level of lubricating solids that keeps working surfaces apart and substantially extends component life
- Being fully resistant to the wet environment
- extends the life of the lubricant and protects components from corrosion
- Adhesion IMP GRIT's provide increased lasting protection

NLGI GRADE

2 - 3

GRIPTO-TECH PU 460

DI - UREA



DESCRIPTION

GRIPTO-TECH PU 460 is a high-performance extreme-pressure grease specially formulated for enhanced lubrication in heavily loaded, low to medium-speed industrial bearings. It is particularly suited for continuous steel casting lines and high-temperature, slow-moving concast bearings in the steel industry. This grease provides reliable performance under extreme conditions, ensuring excellent protection and lubrication for high-temperature, slow-moving bearing applications.

ADVANTAGES

- The operating temperature range is -10°C to +150°C
- Outstanding high-temperature oxidation stability
- Good anti-corrosion properties
- Excellent resistance against water washout
- Long operational life

NLGI GRADE

1.5

GRIPTO-TECH PU 460-SYN

DI - UREA



DESCRIPTION

GRIPTO-TECH PU 460 Syn is a synthetic, high-performance, long-life grease designed for fill-for-life applications across a wide range of industrial uses. Formulated with high-viscosity synthetic base stocks and advanced performance additives, it delivers exceptional durability and reliability. This grease offers excellent water resistance and protection against water washout, making it ideal for demanding environments. It is recommended for applications in the steel and paper industries, wind power systems, and heavy-duty, slow-moving plain and rolling element bearings operating under severe conditions.

ADVANTAGES

- The operating temperature range is -30°C to 150°C
- Outstanding high-temperature oxidation stability
- Excellent extreme pressure properties
- High dropping point
- Effective corrosion protection
- Long operational life

NLGI GRADE

1.5 - 2

GRIPTO-TECH PU 100

DI - UREA



DESCRIPTION

GRIPTO-TECH PU 100 is a multipurpose, high-temperature, extreme-pressure grease designed to provide superior lubrication for heavily loaded ball, roller, and plain bearings operating under high-temperature conditions. Engineered for extended service life, it ensures reliable performance in demanding industrial applications. GRIPTO-TECH PU 100 is recommended for use in industries such as paper, steel, aluminium, chemical, and others requiring durable and effective lubrication solutions.

ADVANTAGES

- The operating temperature range is -10°C to 150°C
- Outstanding high-temperature oxidation stability
- Reduced grease consumption at high temperatures
- Protects bearings against wear under conditions of shock loading
- Resists water washing and rusting
- Long operational life

NLGI GRADE

2

GRIPTO-TECH AX 100-SYN

AL-COMPLEX THICKENER



DESCRIPTION

GRIPTO-TECH AX 100-SYN grease is a premium, high-performance lubricant specially formulated for the food processing industry. It is crafted using fully synthetic base oils, GRIPTO-TECH AX 100-SYN thickener, and advanced performance additives. This grease exhibits strong metal adhesion and exceptional stability under heavy loads and high temperatures. With excellent sealing properties, it is ideal for lubricating bearings exposed to high temperatures and pressures. GRIPTO-TECH AX 100-SYN grease operates efficiently within a temperature range of -40°C to 180°C, ensuring reliable performance in demanding conditions.

ADVANTAGES

- The operating temperature range is -40°C to 180°C
- Operates at extreme temperatures
- Excellent load-carrying capacity
- Good resistance against water
- Excellent adhesive and sealing properties
- Long-lasting lubrication

NLGI GRADE

1 - 2

GRIPTO-TECH CSX-460

CALCIUM SULFONATE COMPLEX



DESCRIPTION

GRIPTO-TECH CSX-460 is a premium, heavy-duty lubricating grease formulated with a calcium sulfonate complex thickener system and high-quality heavy mineral base oil. The unique structure of the calcium sulfonate complex thickener delivers a high dropping point, exceptional extreme-pressure and anti-wear performance, outstanding rust protection, superior mechanical stability, and excellent resistance to water washout. This grease is designed for demanding industrial and heavy-duty applications, ensuring reliable performance in challenging environments.

ADVANTAGES

- The operating temperature range is from -25 to 180°C
- High-load carrying capacity
- Good water resistance properties
- Good oxidation and thermal stability
- Good mechanical stability
- Good rust and corrosion protection
- Excellent EP and anti-wear properties

NLGI GRADE

0 - 1 - 1.5 - 2

SEARCH FOR

SAFEZ



Internal